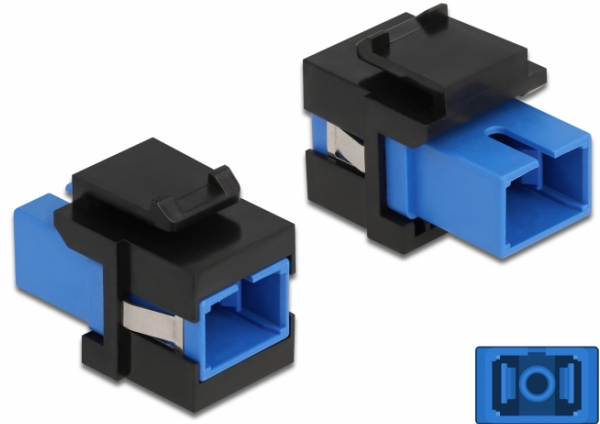


Keystone Module SC Simplex female to SC Simplex female blue / black

Description

This module by Delock can be used to extend fiber optic cables. With its standardised dimensions it can be used for easy snap-in mounting in e.g. a Keystone patch panel, face plate or surface-mount box.



Specification

- Connectors:
 - 1 x SC Simplex female >
 - 1 x SC Simplex female
- Colour: blue
- For single-mode fiber
- Insertion loss • With dust cover
- For Keystone ports with 19.2 x 14.9 mm
- Housing colour: black
- Dimensions (LxWxH): ca. 27.4 x 16.5 x 21.9 mm

System requirements

- A free SC plug

Package content

- Keystone module

Item no. 86812

EAN: 4043619868124

Country of origin: China

Package: Zip poly bag

Images



General	
Mounting type:	Keystone module
Interface	
Connector 1:	1 x SC Simplex female
Connector 2:	1 x SC Simplex female
Physical characteristics	
Housing colour:	black
Length:	27.4 mm
Width:	16.5 mm
Height:	21.9 mm
Colour:	blue