



RUT950 LTE Router

Quick start guide v10.0



Front view

- 1 LAN Ethernet ports
- 2 WAN Ethernet port
- 3 LAN LEDs
- 4 WAN LED
- 5 Power socket
- 6 Power LED
- 7 Mobile connection status LED
- 8 Mobile signal strength indication LEDs



Power socket pinout

No.	Description	Wire color
1	Power	Red
2	Ground	Black
3	-	Green
4	-	White



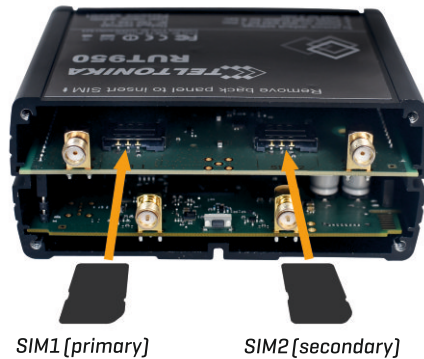
Back view

- 1 LTE antenna connectors
- 2 WiFi antenna connectors
- 3 Reset button



Hardware installation

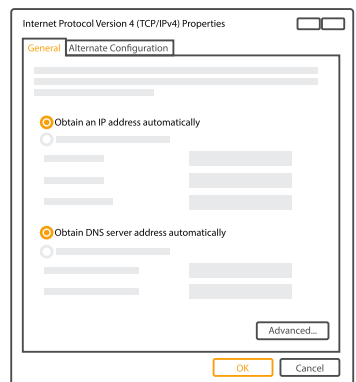
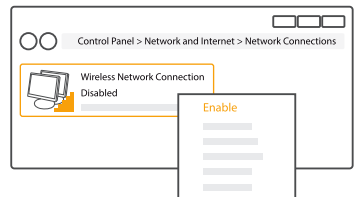
1. Remove back panel and insert SIM cards which were given by your ISP (Internet Service Provider). Correct SIM cards' orientation is shown in the picture below.



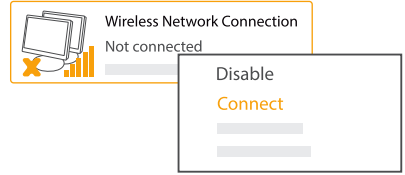
2. Attach LTE and WiFi antennas.
3. Connect the power adapter to the socket on the front of the device. Then plug the other end of the power adapter into the power socket.
4. Connect to the device wirelessly (SSID: RUT950_****) or use Ethernet cable and plug it in to any LAN Ethernet port.

Configure your computer (Windows)

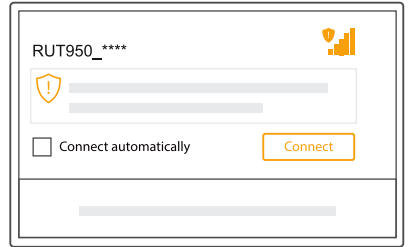
1. Enable the wireless network connection (go to **Start > Control Panel > Network and Internet > Network and Sharing Center**. In the left panel click **Change adapter settings** link. Right click on **Wireless Network Connection** and select **Enable**).
2. Setup wireless network adapter on your computer (right click on **Wireless Network Connection** and select **Properties**. After that select **Internet Protocol Version 4 (TCP/IP)** and click **Properties**).
3. Select **Obtain IP address automatically** and **Obtain DNS server address automatically** if they are not selected. Click **OK**.



- Right click on [Wireless Network Connection](#) and select [Connect](#) to see available wireless networks.

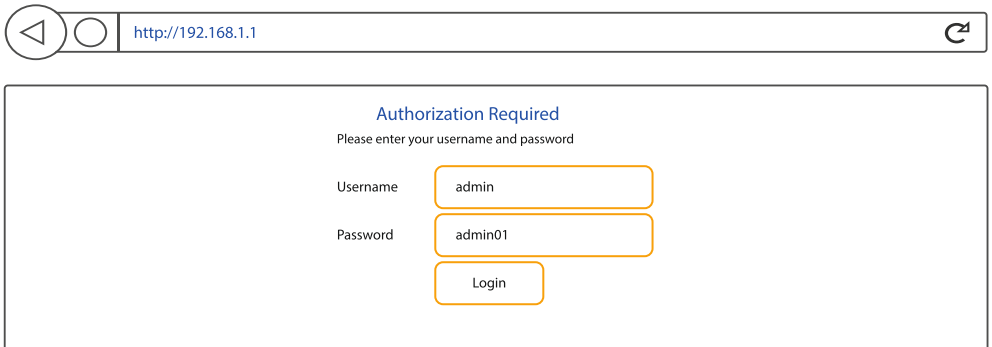


- Choose the wireless network [RUT950_****](#) from the list and click [Connect](#). Enter the WiFi password found on device label.




Login to device

- To enter routers Web interface type <http://192.168.1.1> in your internet browser.
- Use the following parameters when prompted for authentication:



- [Configuration Wizard](#) will start after logging in. It is necessary to complete [Configuration Wizard](#) to setup router to correct mode. You can leave default settings but it is strongly recommended that you change the password and enable [Wireless Security](#).
- Go to [Status > Network information](#) and pay attention to [Signal Strength](#). To maximize the performance try adjusting antennas or changing location of your device to achieve best signal conditions.

Login to device

Mobile	WAN	LAN	Wireless	OpenVPN
Mobile Information				
Mobile 				
Data connection state	Connected			
IMEI	860461024004296			
Sim card state	OK			
Signal strength	-44 dBm			

Safety information

RUT950 router must be used in compliance with any and all applicable national and international laws and with any special restrictions regulating the utilization of the communication module in prescribed applications and environments.

Radio specifications	
RF technologies	GSM, GPRS, EDGE, UMTS/HSPA+, LTE, WiFi
Max RF power	33 dBm@GSM, 24 dBm@WCDMA, 23 dBm@LTE, 20 dBm@WiFi
Bundled accessories specifications*	
Power	AC/DC power adapter 9 V 1 A, 4 pin plug
GSM/WCDMA/LTE antenna	698-960/1710-2690 MHz, 50 Ω, VSWR<3, gain** 3 dBi, omnidirectional, SMA male connector
WiFi antenna	2400-2483.5 MHz, 50 Ω, VSWR<2, gain** 5 dBi, omnidirectional, RP-SMA male connector

*Order code dependent.

**Higher gain antenna can be connected to compensate for cable attenuation when cable is used. The user is responsible for the compliance with the legal regulations.



This sign on the package means that it is necessary to read the Users Manual before you start using the device.



This sign on the package means that all used electronic and electric equipment should not be mixed with general household waste.



Hereby, Teltonika declares that the radio equipment type RUT950 is in compliance with Directives: 2014/53/EU, 2014/35/EU, 2014/30/EU. The full text of the EU declaration of conformity is available at the following internet address: <http://teltonika.lt/product/rut950/>