



Quick Start Guide

Xtreme System

P/N:

User Manuel for UP Xtreme Edge Computing System with Whiskey
Lake CPU

Revision:	01	
Update Date:	4 December 2019	
Prepared For:	UP Shop User	AAEON
Prepared By:	Wendy Lee	AAEON Europe

Revision History

The following table contains the information regarding the history and revisions of this living document.

Version	Date	Contributor	Changes Description
01	18 Nov 2019	Eric Duncan	Initial Creation

Document Attributes

The following table contains the list of files that are associated with this living document.

Filename	Description
N/A	

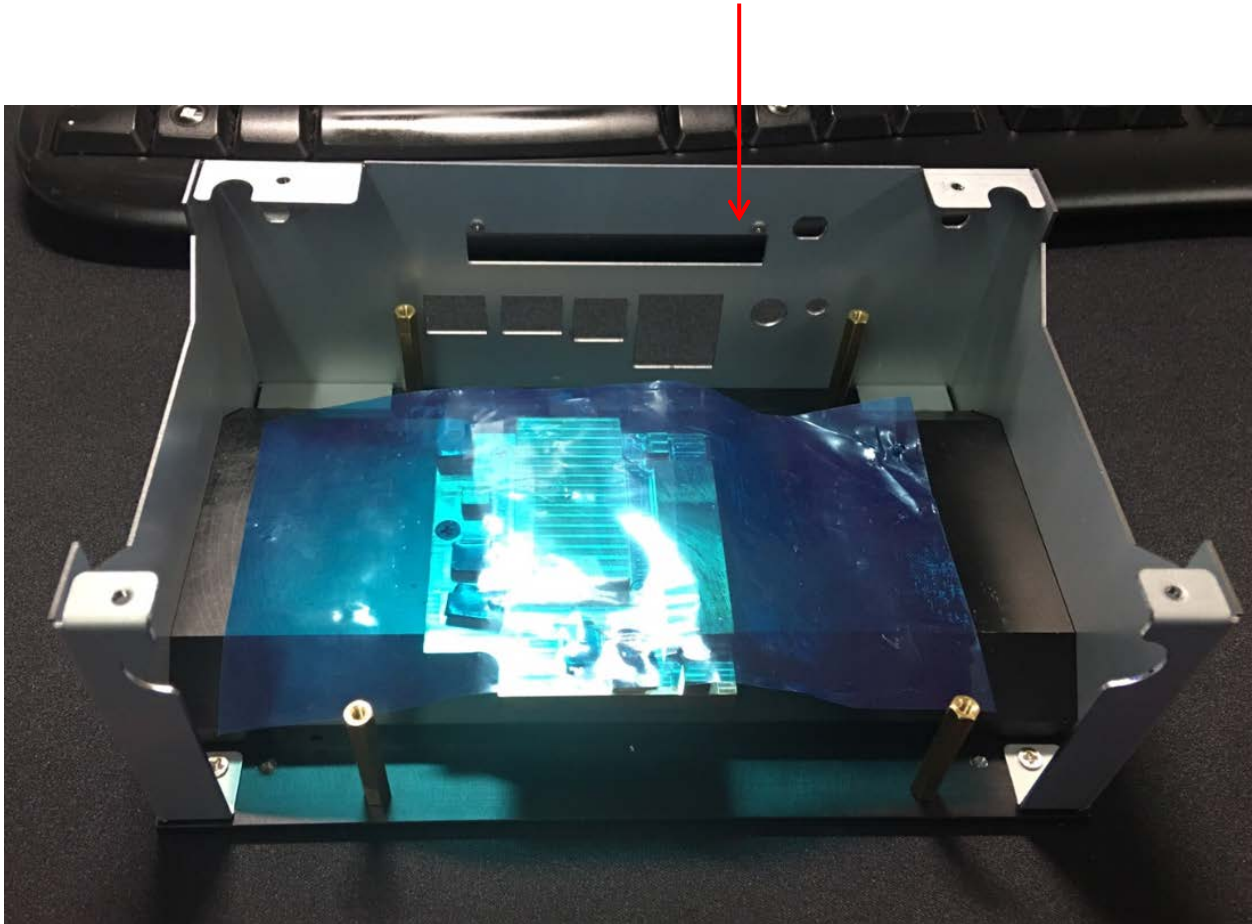
Assembly STEP

1. Take UP Xtreme Chassis and unscrew the top.



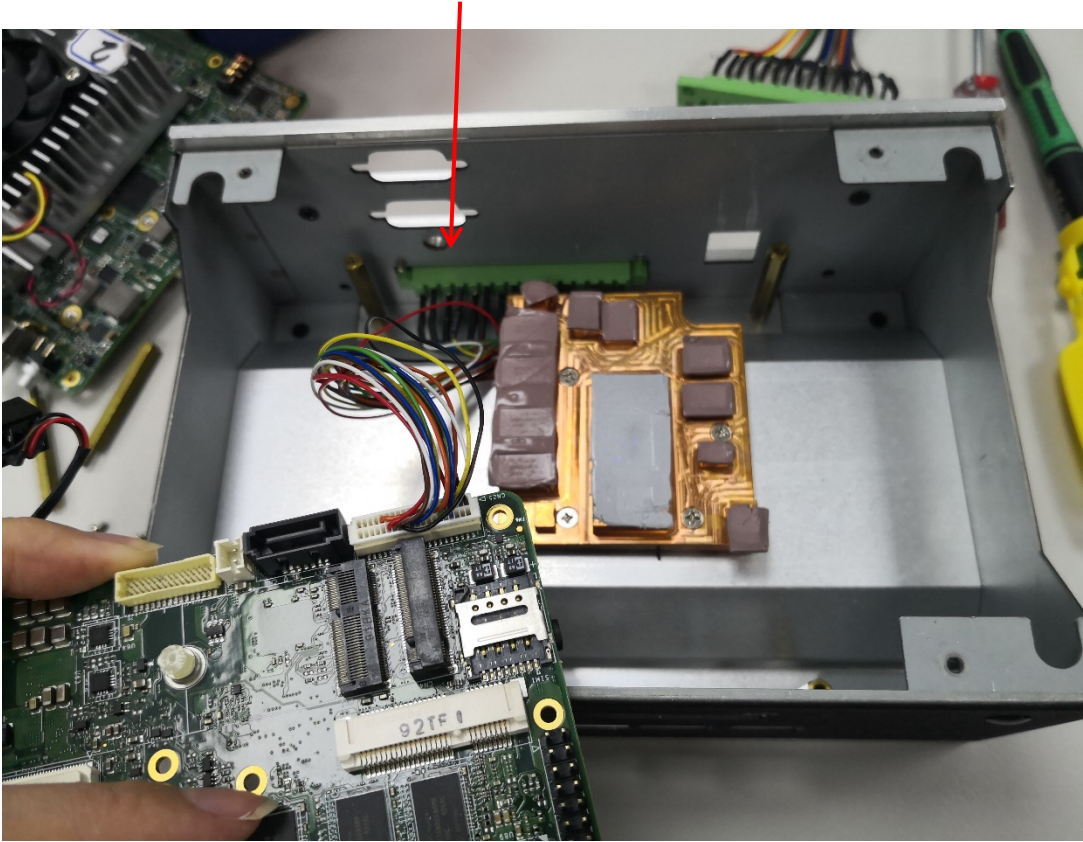
2. Take UPX-EDGE_BASE ASY and remove protection film.

UPX-EDGE_BASE ASY

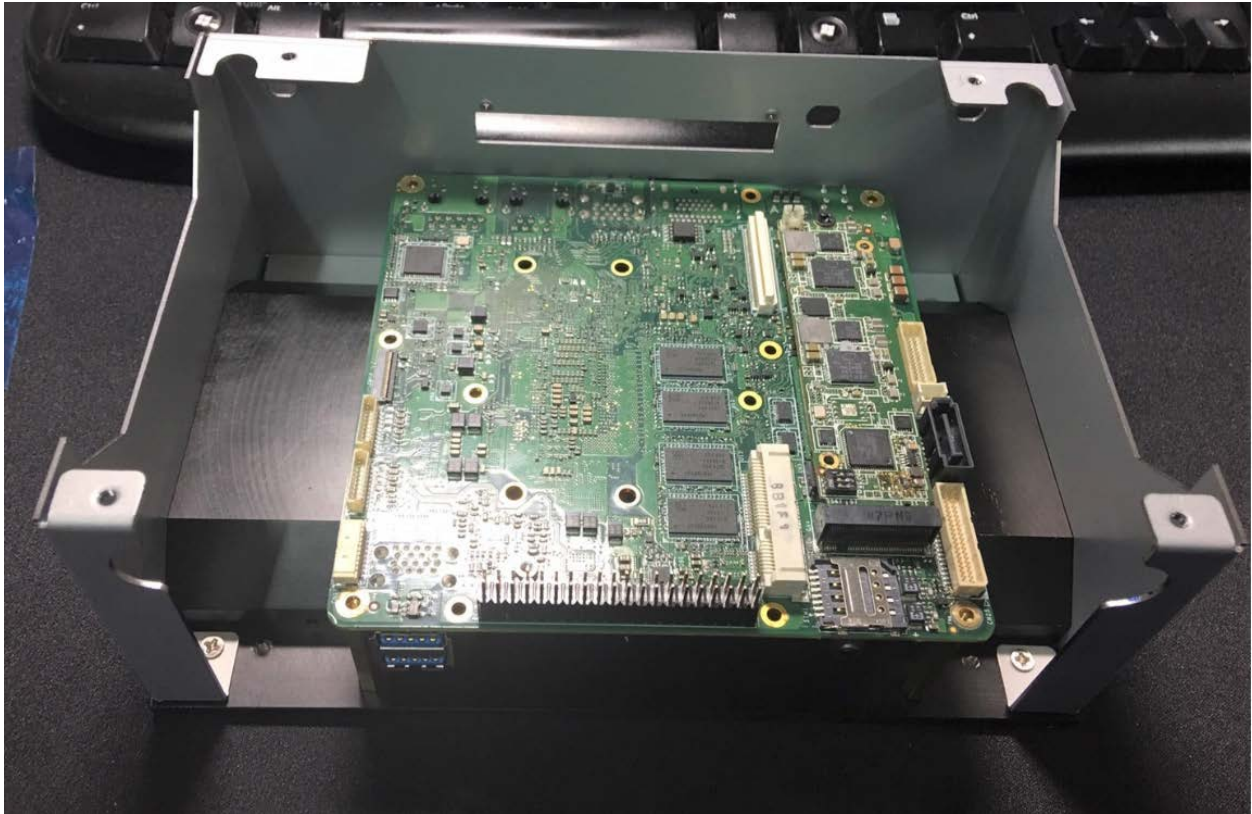


3. Take the GPIO cable to go through the chassis and connect the pin head to CN25 (STM32 connector)

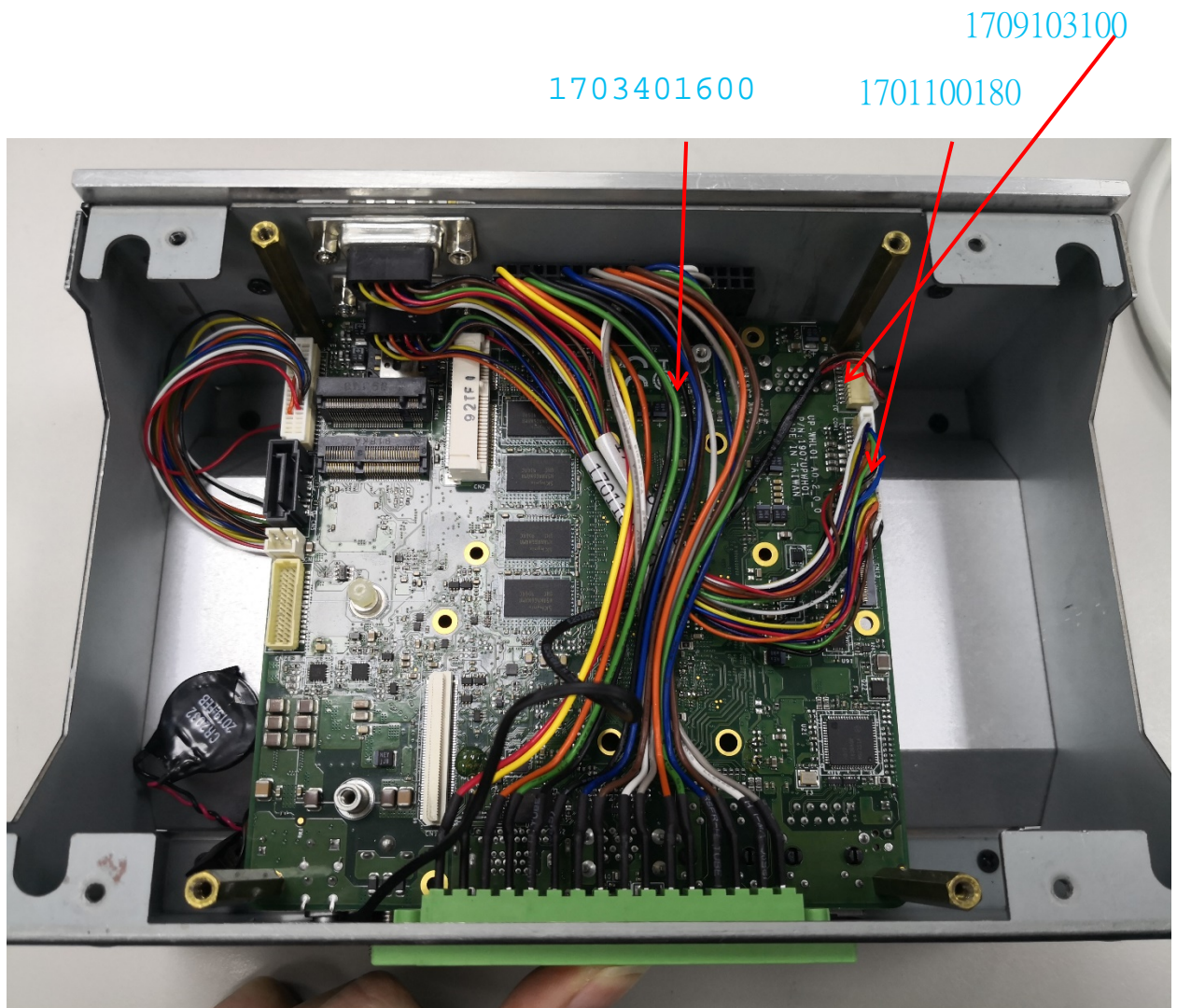
1703401600



4. Take the PCB and turn the CPU side downward and put it in the chassis

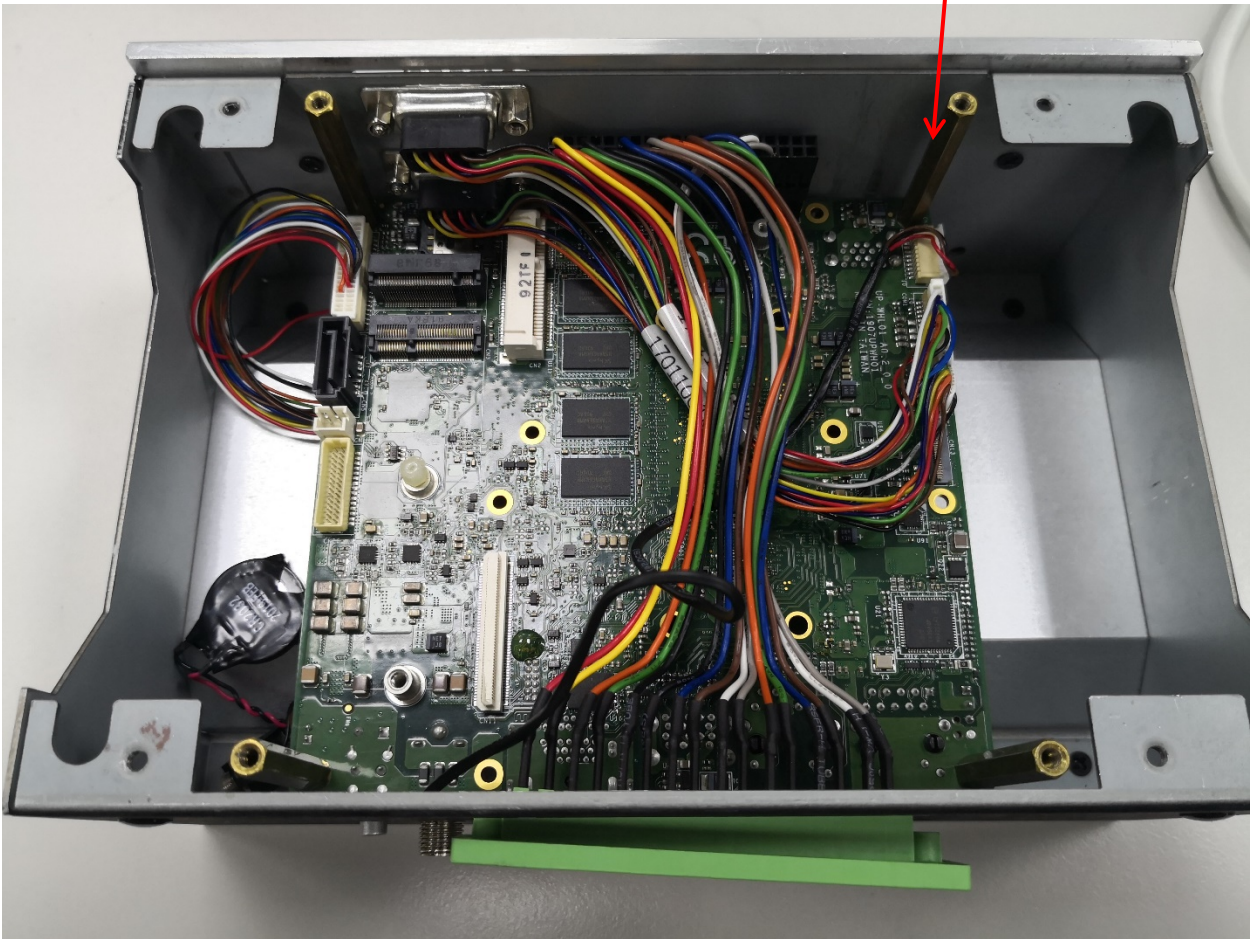


5. Take another GPIO cable (1703401301) to go through the Chassis and connect the pin head to the 40pin HAT and screw the cable on the chassis.
6. Take the two com ports (#1701100180) and connect the pin head to COM1 and COM2 and screw the cables on the chassis.
7. Take debug port cable (1709103100) and connect the pin head to CN16 and screw the cables with the ring on the chassis.

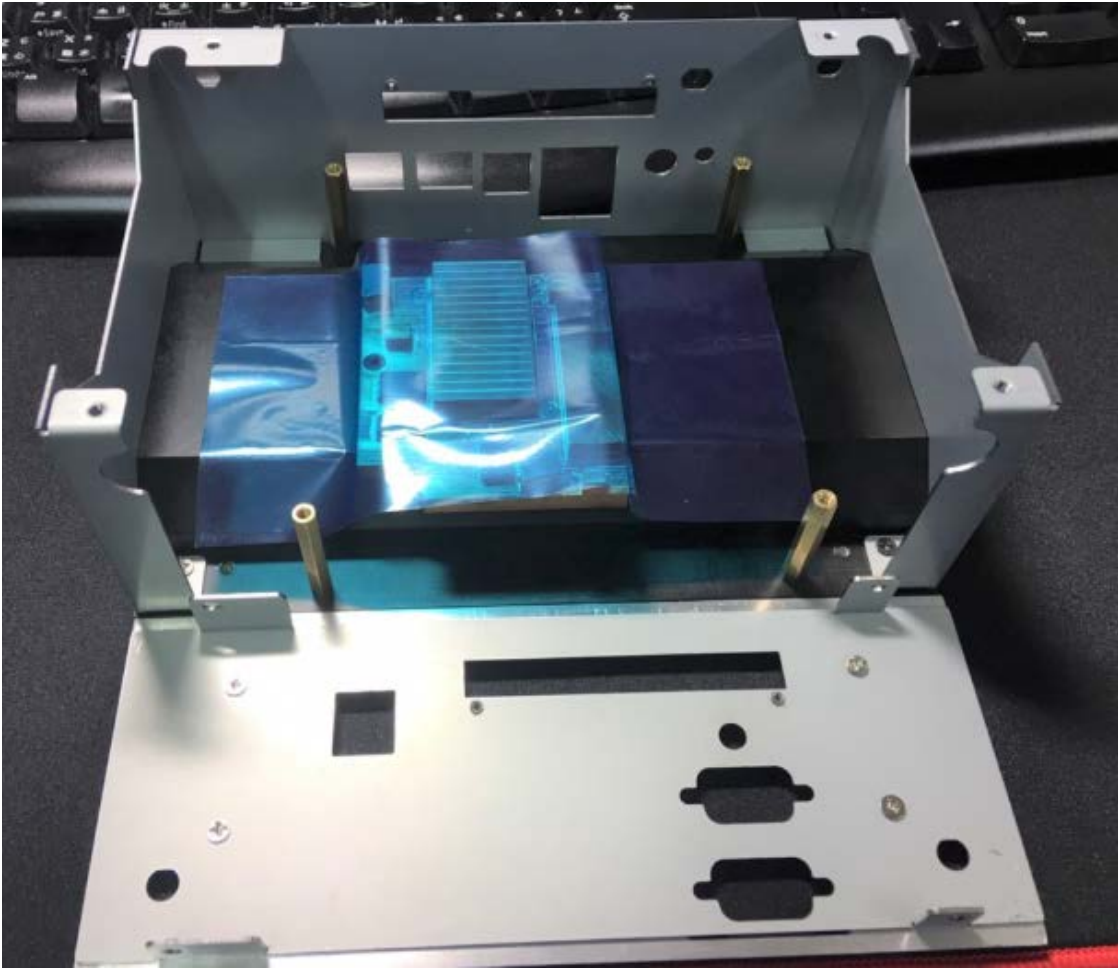


8. Screw the support poles*4 on the PCB

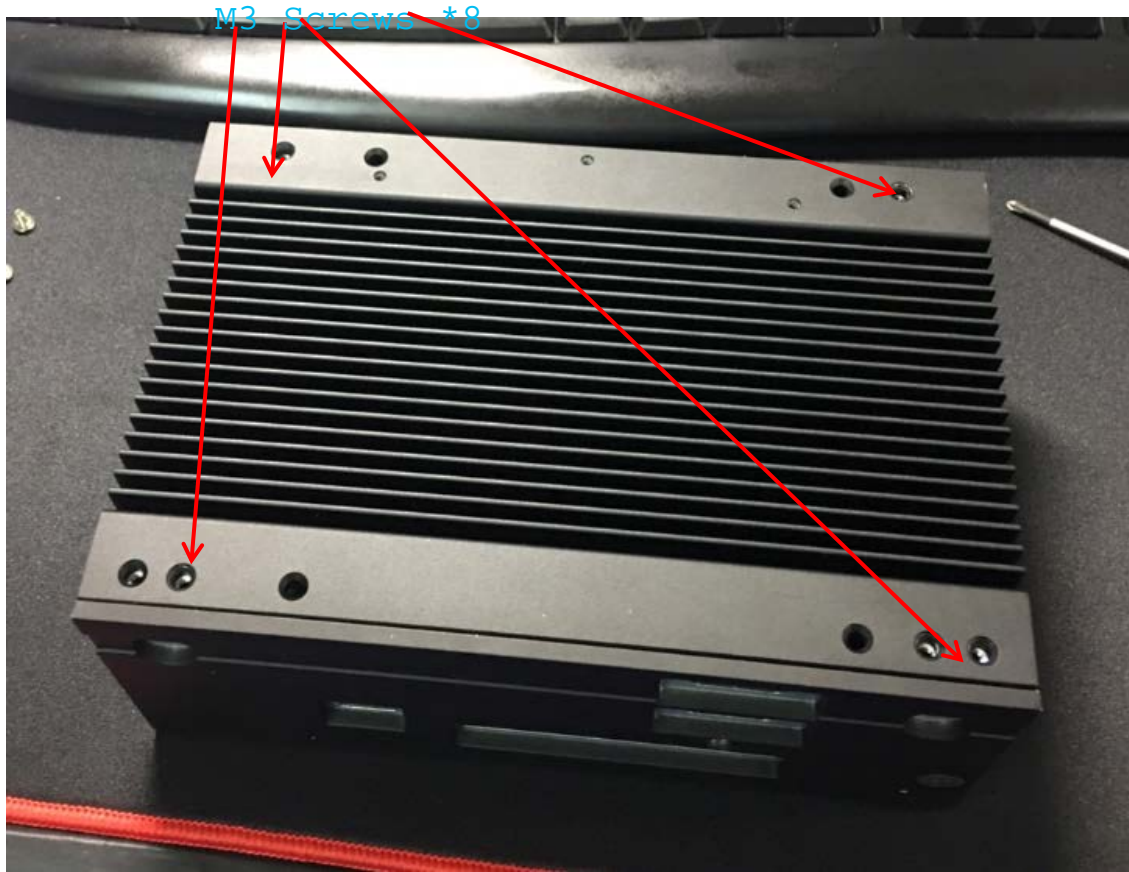
Support poles



9. Screw the panel on the base

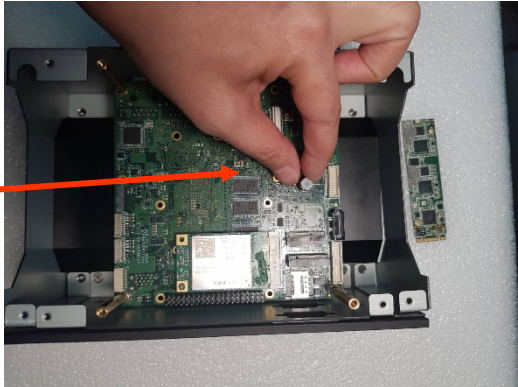
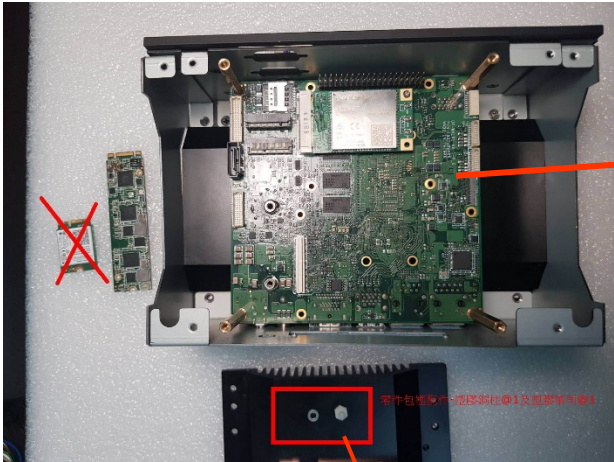


10. Put the top of chassis on and screw it with the e.



AI Core XM.2 2280 Assembly

1. Screw the plastic screw on the PCB



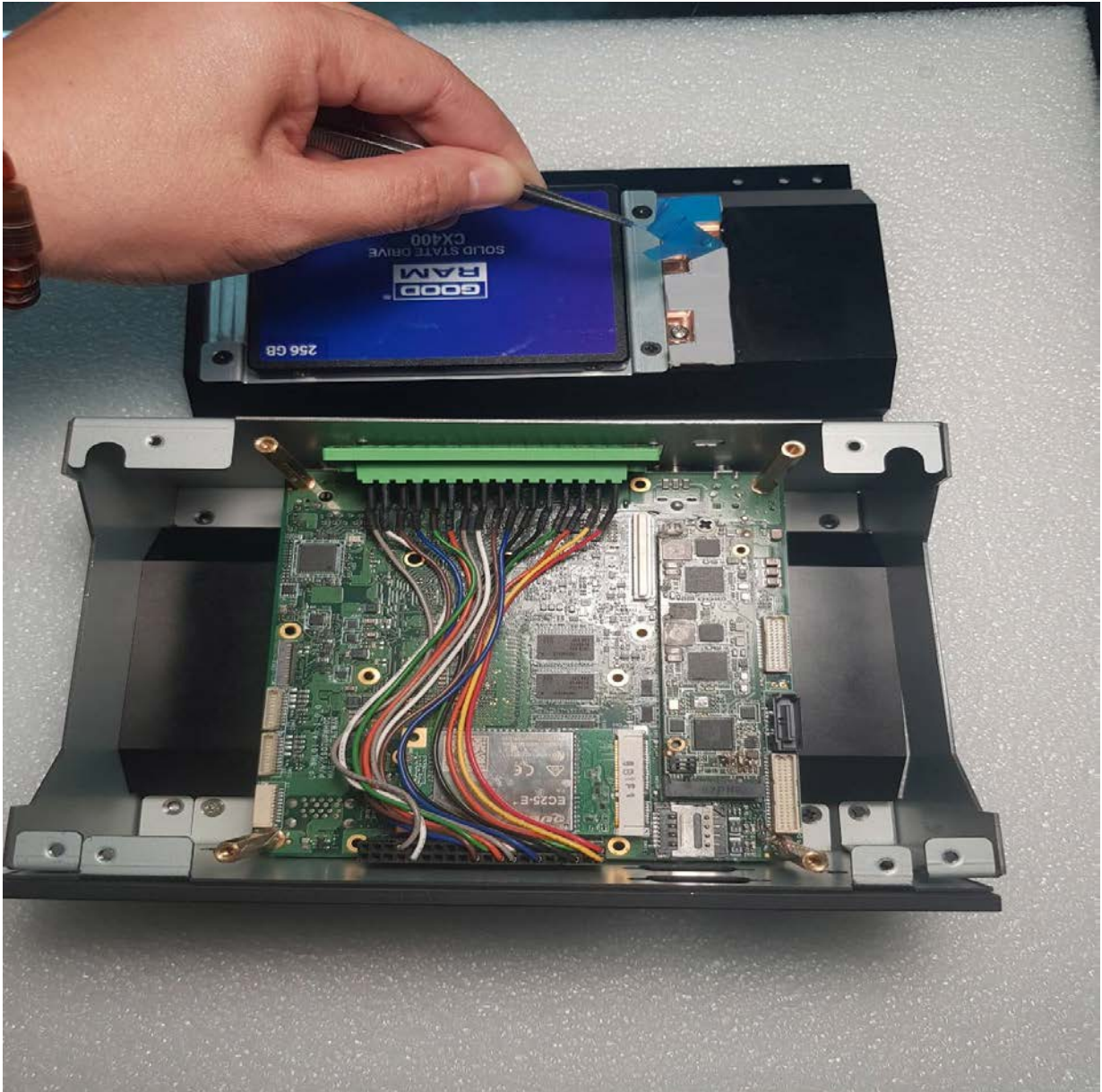
Put the plastic ring on the plastic screws



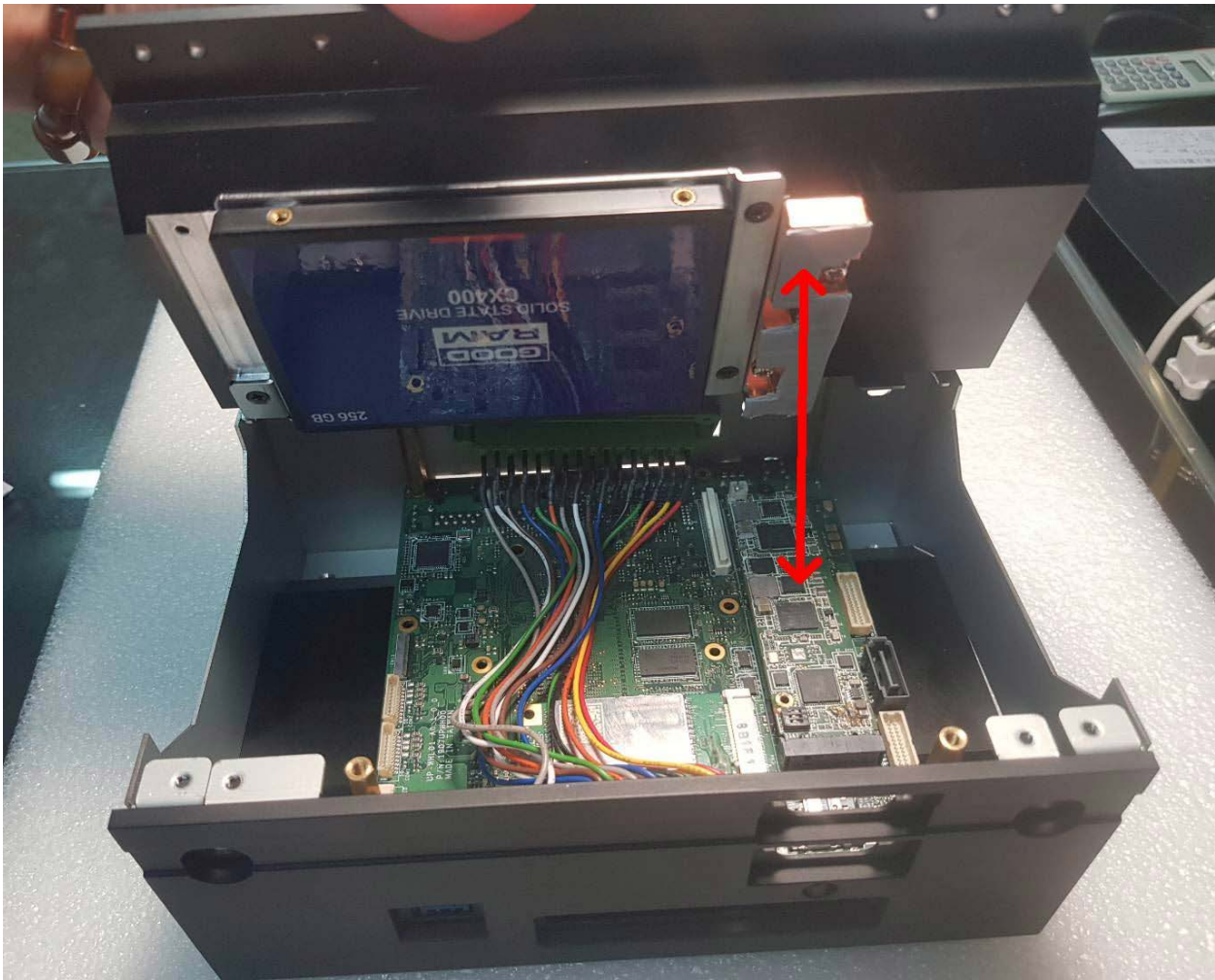
2. Put the M.2 2280 on and screw with M3*4



4. Remove the protection film on the thermal block



5. Put the top back on. Not that the thermal block should be the same direction as M.2 2280



11. Put the top of chassis on and screw it with the e.

M3 Screws *8

