



UP-GWS01 WiFi module installation SOP

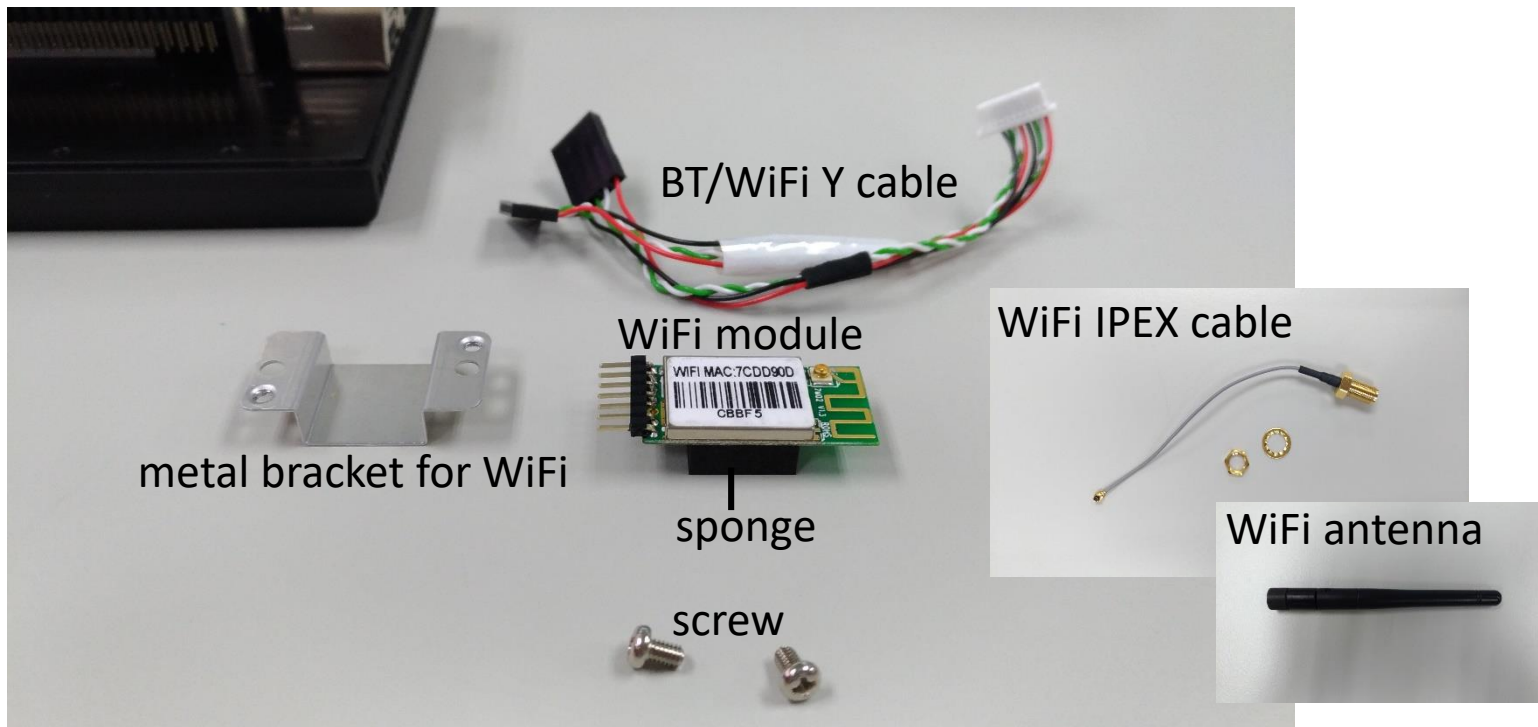
Module Kit P/N : UP-WIFIKIT-A10-7001

Presenter : Irene Lin

Date : 2017.06.21

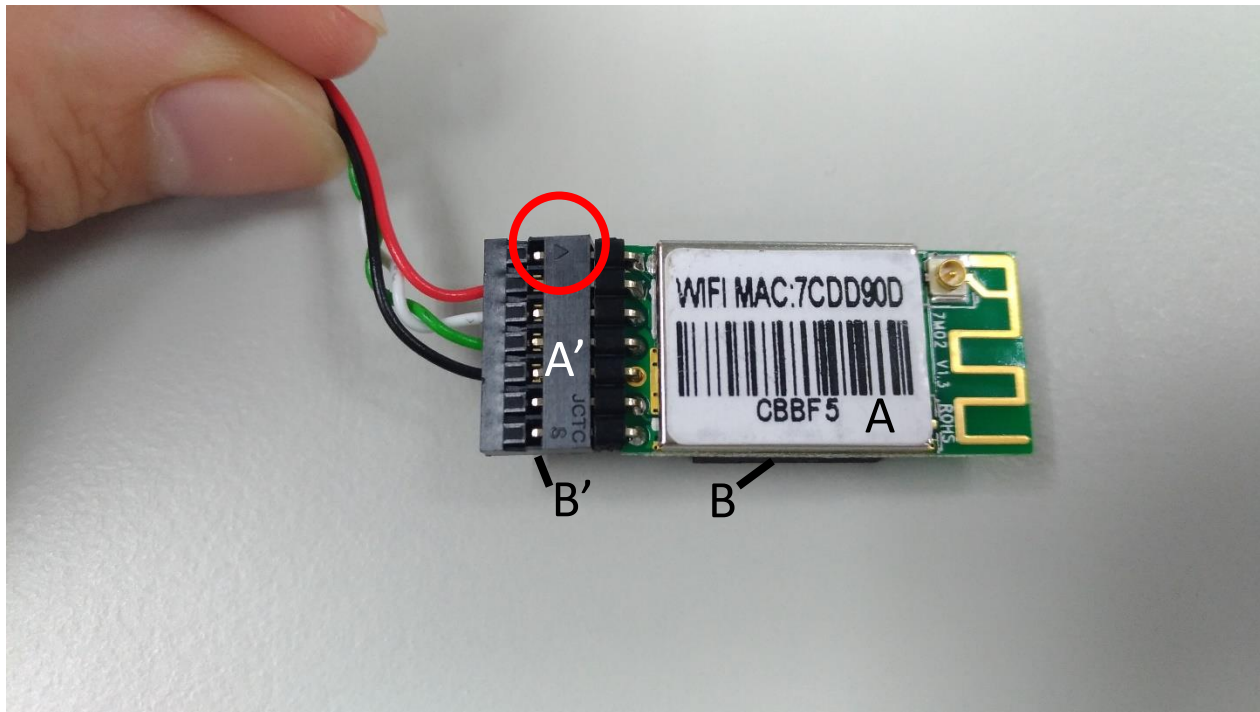
SOP

- Step 0 : WiFi module, WiFi IPEX cable, WiFi antenna, BT/WiFi Y cable, sponge*3, metal bracket for WiFi, screw*2
- Apply the sponge to module first



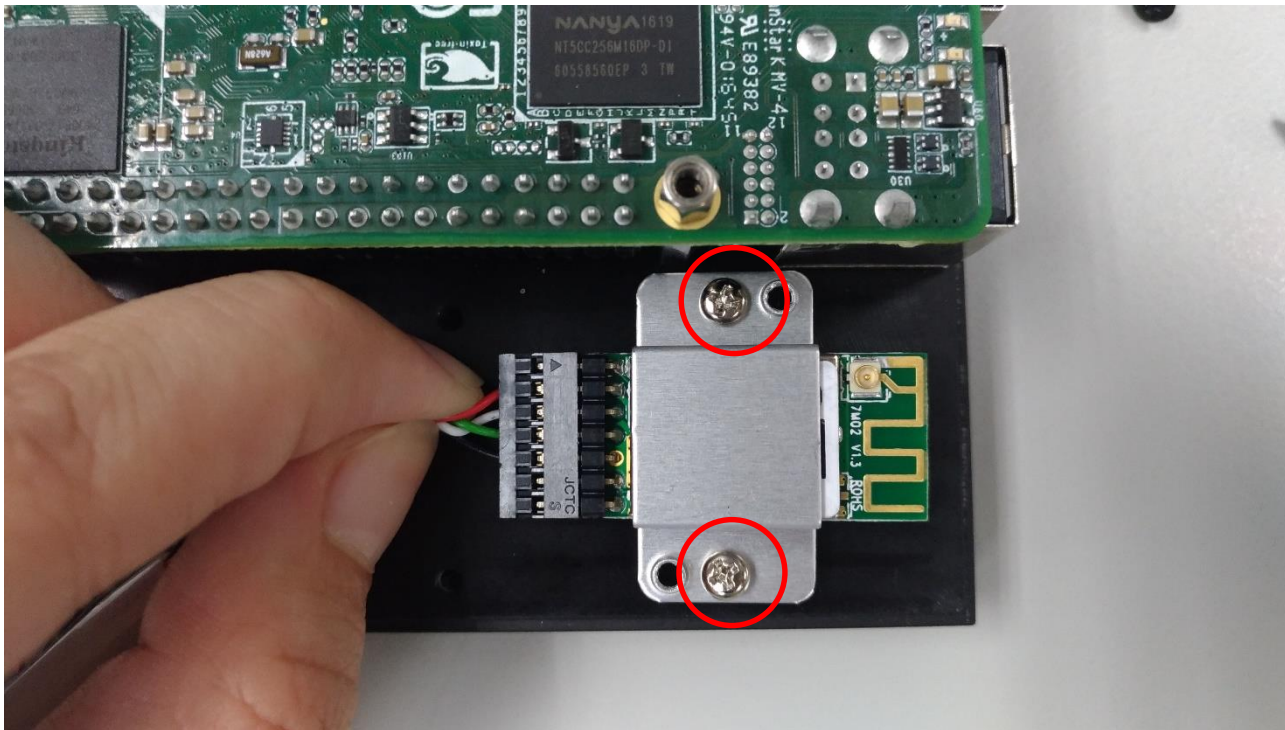
SOP

- Step 1 : Connect the WiFi module by the bigger WiFi cable
- Warning : Connect side A(with lable) of WiFi module up with side A'(with" ▲ ") of WiFi port up. **The WiFi module can be burned out if it's connected in the wrong way.**



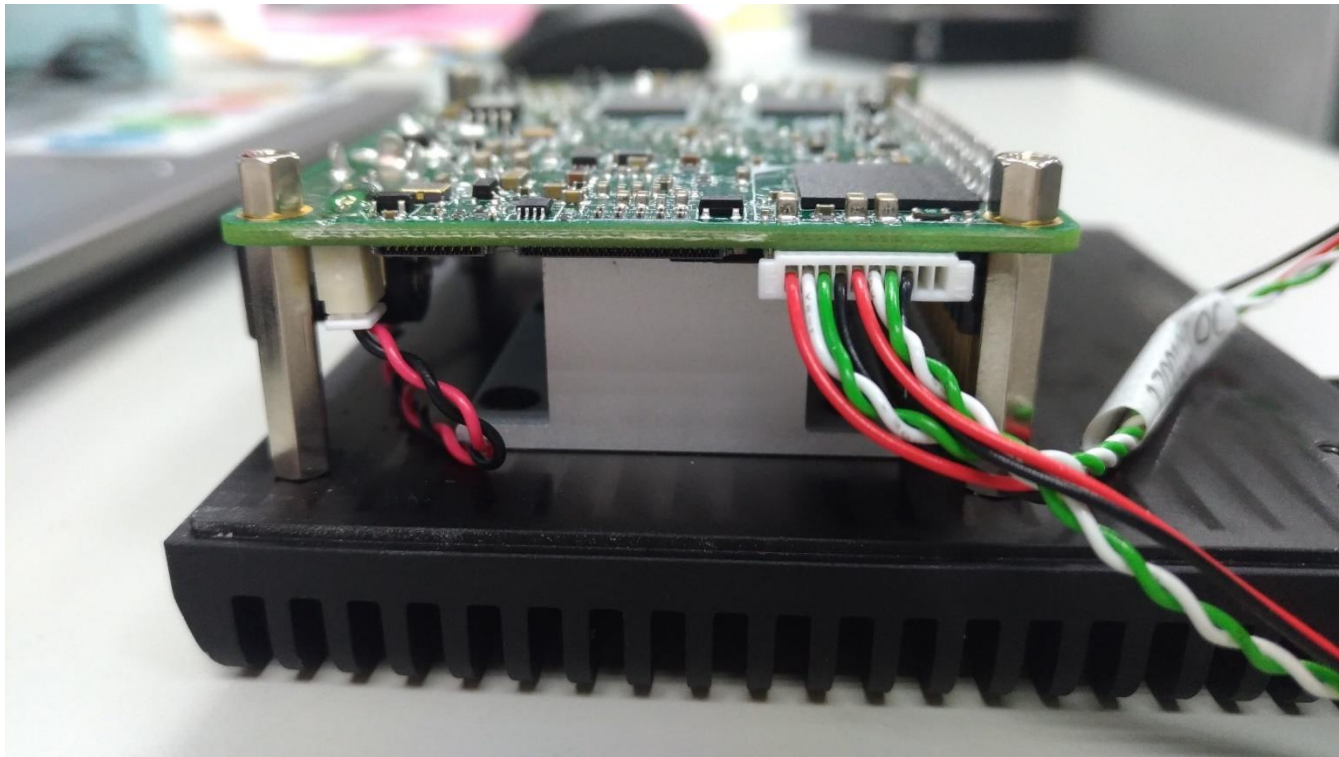
SOP

- Step 2 : Put WiFi module on the base and fix the metal bracket on top of it with screws



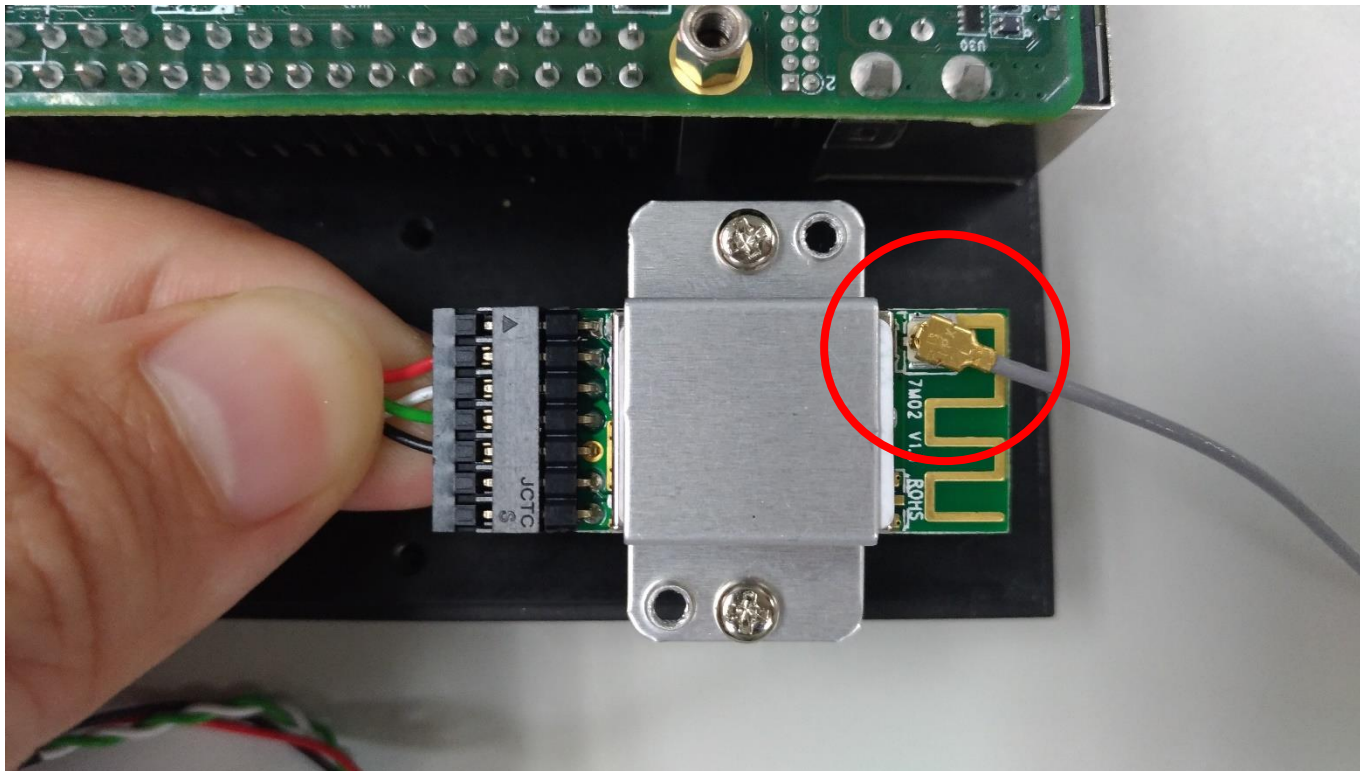
SOP

- Step 3 : Insert WiFi/BT Y cable into UP-CHT01 via port per image illustrated



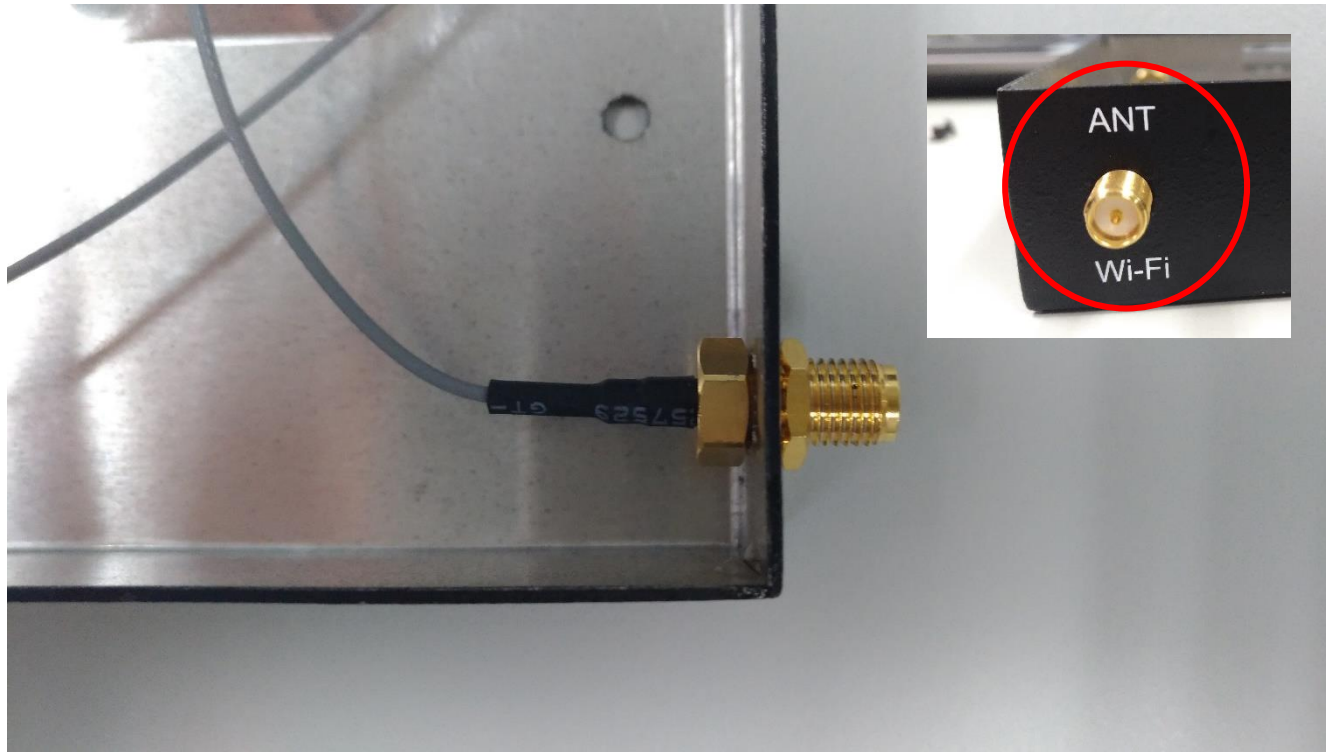
SOP

- Step 4 : Buckle the WiFi IPEX cable into WiFi module per image illustrated



SOP

- Step 5 : Secure the WiFi IPEX cable onto the chassis per illustration below



SOP

- Step 6 : Tight the bolt and fix WiFi antenna



SOP

- Step 7 : Fasten the screws on the chassis



SOP

- Step 8 : Done



Thank You