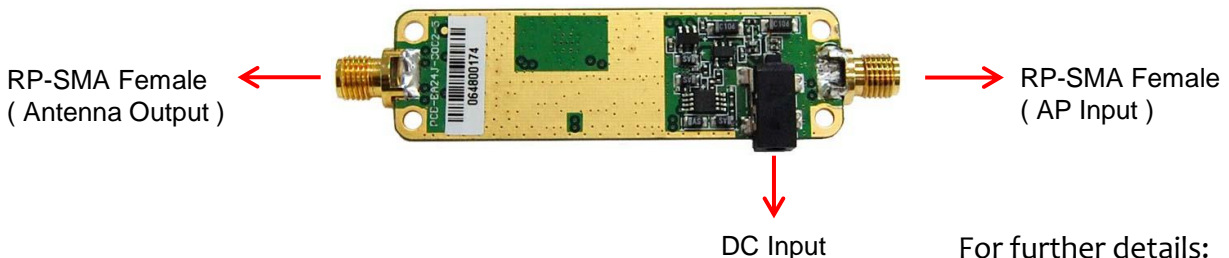


APA05MD

800mW Bi-Directional Booster Module



- **4x the area coverage**
APA05MD increases the coverage by 4x times compared to a standard wireless access point.
- **Suitable for WiFi Enthusiast / Developer**
Status indicators & RP-SMA Female connectors on both sides of the pcb giving diversity for developers.
- **Maximizes Weak Signals**
Not only boosts output signal but also has a receive gain of 20dBm.
Can also be used for analogue CCTV applications.
- **Gold Plated SMA Connector**
Allowing you to connect to a 2.4-2.5GHz source, and fits most WiFi antenna.
- **Power Source required**
Requires a 5VDC 500mA max regulated power supply.



For further details:

ALFA
NETWORK
Your Source of Hardware

Alfa Network Inc.
<http://www.alfa.com.tw>
sales@alfa.com.tw

APA05MD

800mW Bi-Directional Booster Module

Technical Specifications:	
Frequency	2.4~2.5GHz
Signal Type	DSSS/OFDM
TR Switch Time	< 1µsec
RX Max. Input Power	-10dBm
RX Max. Power Gain	13dB
TX Max. Linear Output	500mW / +27dBm
TX Max. Power Gain	13 dB
TX Input Power	20 dB
DC Supply	5V/500mA
DC Jack Dimension	Ø2.7 x Ø0.65 x 8.5mm (±0.5mm)
Status LED	PWR@Green TX@Red RX@Amber
AP Connector Type	RP-SMA Female
Antenna Connector Type	RP-SMA Female
Operating Temperature	-0~+50°C
Dimensions L*W*H	60 x 17.77 x 8mm (±0.5mm)
Weight	7.30g



For further details:

Alfa Network Inc.
<http://www.alfa.com.tw>
sales@alfa.com.tw

Tel:+886-2-27968477 | Fax:+886-2-27968478

APA05MD

800mW Bi-Directional Booster Module

Dimension Specifications:

