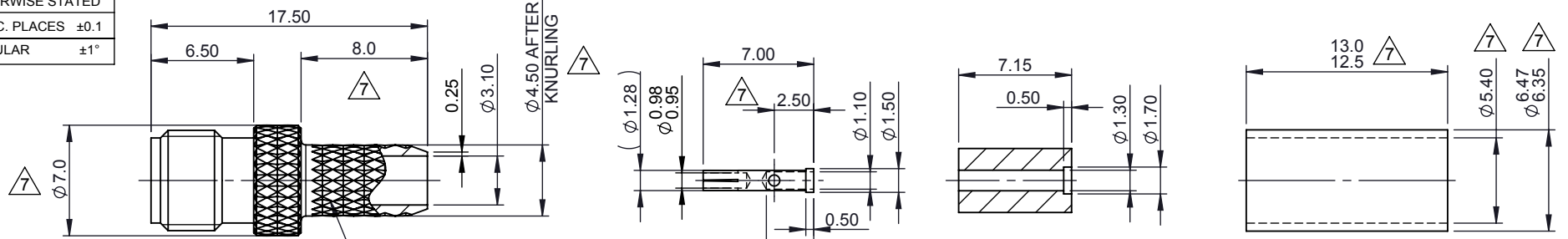


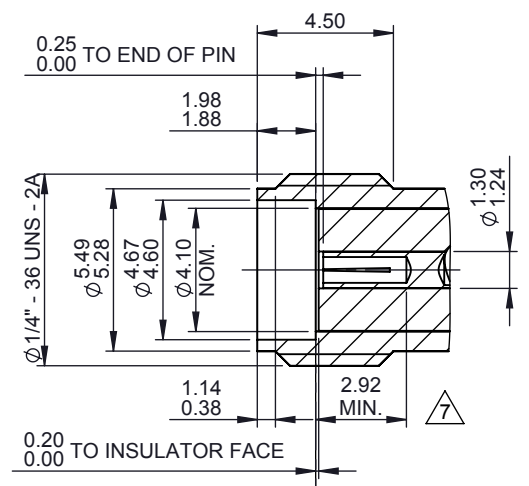
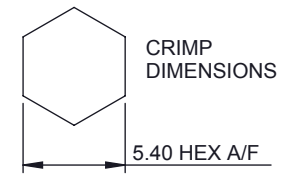
TOLERANCES UNLESS OTHERWISE STATED

0 DEC. PLACE	±0.5	2 DEC. PLACES	±0.1
1 DEC. PLACE	±0.2	ANGULAR	±1°



NOTES: $\triangle 7$

- IMPEDANCE 50 Ω .
- CONTACT PIN MUST REMAIN CAPTIVE AFTER ASSEMBLY OF CONNECTOR.
- FINAL CONNECTOR ASSEMBLY MUST CONFORM TO STANDARD INTERFACE DIMENSIONS SHOWN.
- MATERIALS:
 CONNECTOR BODY: BRASS CW603N (CuZn36Pb3), BRASS CW614N (CuZn39Pb3) OR APPROVED EQUIVALENT
 CONTACT PIN: BERYLLIUM COPPER CW101C (CuBe2) OR APPROVED EQUIVALENT.
 INSULATOR: PTFE.
 CRIMP TUBE: BRASS CW603N (CuZn36Pb3), BRASS CW614N (CuZn39Pb3) OR APPROVED EQUIVALENT
- FINISH:
 CONNECTOR BODY:
 GOLD (0.127 μ m MIN.) OVER NICKEL (1.27 μ m MIN.) OVER COPPER (1.27 μ m MIN.)
 - FINISHED PLATING THICKNESS 2.5-3.0 μ m.
 CONTACT PIN:
 GOLD PLATED (1.27 μ m MIN.) OVER NICKEL (1.27 μ m MIN.)
 INSULATOR: SMOOTH MACHINED
 CRIMP TUBE: AS PER CONNECTOR BODY.
- ALL THREADS TO BE FREE FROM RESTRICTION ALONG ENTIRE LENGTH AFTER PLATING.
- ALL DIMENSIONS APPLY AFTER PLATING.
- SAMPLES MUST BE APPROVED BY PANORAMA ANTENNAS Q.C. BEFORE COMMENCING PRODUCTION.
- ALL PARTS MUST BE RoHS COMPLIANT AND MUST NOT CONTAIN ANY SUBSTANCES OF VERY HIGH CONCERN (SVHCs) LISTED UNDER REACH OR POLY-AROMATIC HYDROCARBONS (PAHs), OR PERSISTENT ORGANIC POLLUTANTS (POPs) CONTROLLED BY THE STOCKHOLM CONVENTION.
- IN ORDER TO ASSURE COMPLIANCE WITH THE USA DODD-FRANK ACT (SECTION 1502) TIN, GOLD, TANTALUM AND TUNGSTEN CONTAINED IN PANORAMA PRODUCTS MUST BE FULLY TRACEABLE TO A SMELTER APPROVED BY THE CONFLICT-FREE SOURCING INITIATIVE (www.conflictfreesmelter.org).



PRODUCT/ASSEMBLY CONNECTORS		DESCRIPTION SMA CRIMP JACK FOR 5mm COAX CABLE			
MATERIAL SEE NOTE 4		APPROVED KD	DO.CHECK PE	SCALE 2.5:1	DIMENSIONS IN mm
FINISH SEE NOTE 5					
WEIGHT 3.06g	SHEET 1 OF 1				

01019	7	REDRAWN IN 2D. NOTES AND DIMENSIONS UPDATED.	01/08/2014	ATB
PCN	REV.	DESCRIPTION OF CHANGE	DATE	DRAWN
REVISIONS				