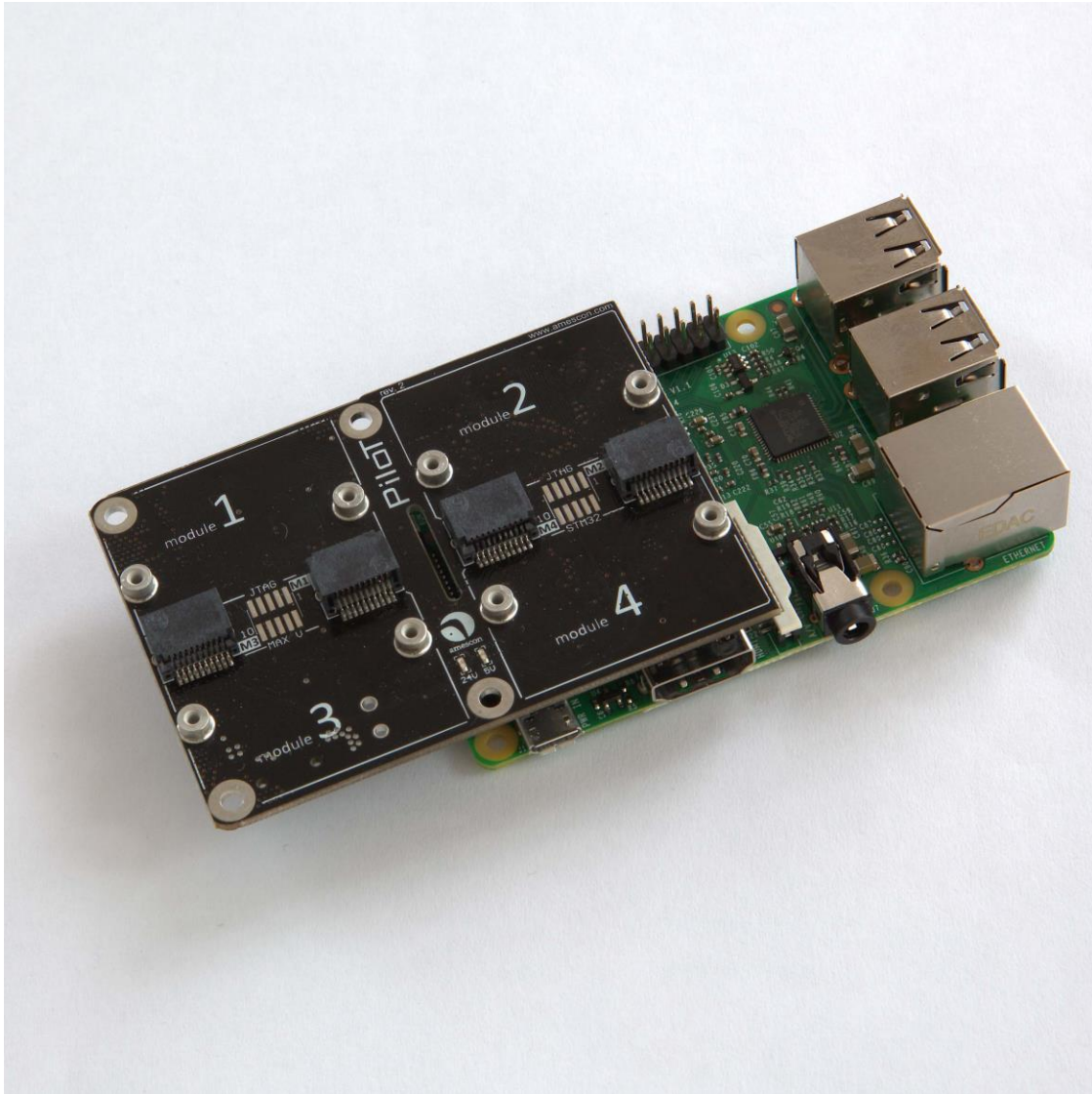


PiLoT Mainboard for Raspberry Pi and other compatible Mini PC Platforms



Features

- Upgrades the Raspberry Pi to a powerful automation platform
- Compatible to Raspberry Pi A/B/B+ and Raspberry Pi 2 and 3
- Slots for up to 4 PiLoT extension modules with a wide variety of features (digital and analog I/Os, serial ports, sensors, relays, valves, GSM, GPS, ...)
- 32 bit ARM microcontroller for real-time operation and PLC features



- Altera CPLD for dynamic wiring and ultra-fast logic
- Real-time clock (backup battery not included, CR1025 battery required for RTC)
- Open Source Software and full driver support for Raspbian
- Ideal for powerful industrial and home automation projects and OEM products

Technical Specifications

- 4 Pilot Module Slots with mounting holes (M2, screws included)
- Size: 80mm x 56.5mm (3.15 in x 2.22 in)
- Power supply: Pi Powered, 5V or 24V depending on version
- ARM STM32F103 or STM32F405 microcontroller at 72MHz or 168MHz depending on version
- Power Consumption: ~50mA max. Modules may require additional power

Setup

Run the following command from the Raspberry Pi Console to setup the driver:

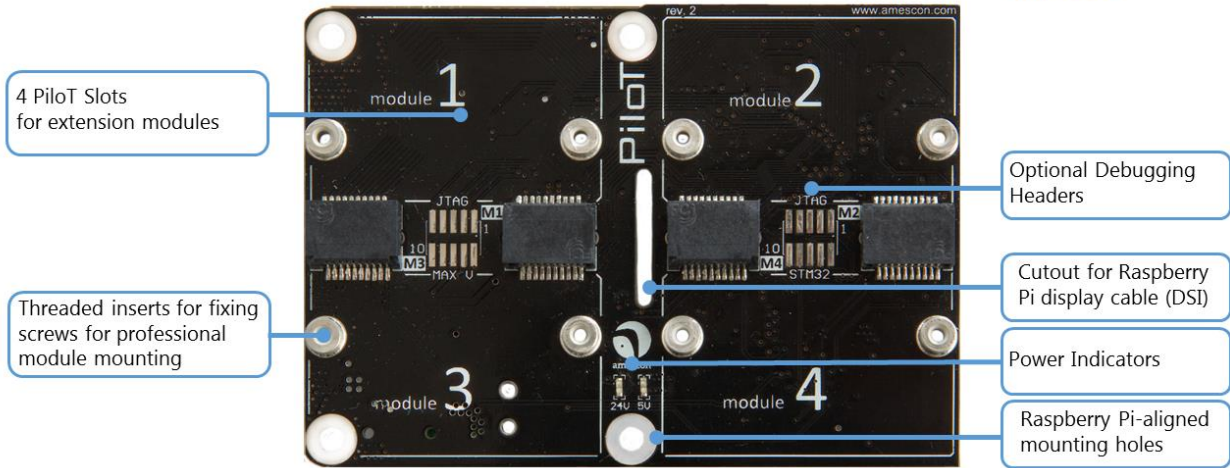
```
wget http://downloads.amescon.com/pilotsetup.sh && chmod +x ./pilotsetup.sh  
&& sudo ./pilotsetup.sh
```

For a getting started tutorial visit <http://www.amescon.com/tutorials/pilot-getting-started>

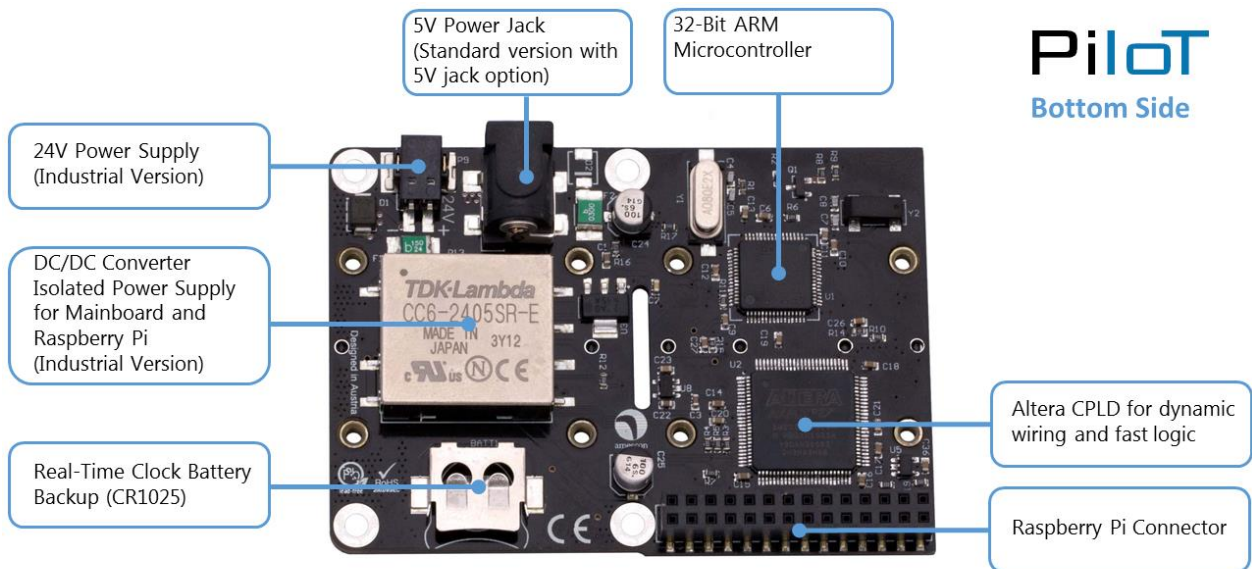


Onboard Connectors and Functions

Pilot Top Side



Pilot Bottom Side



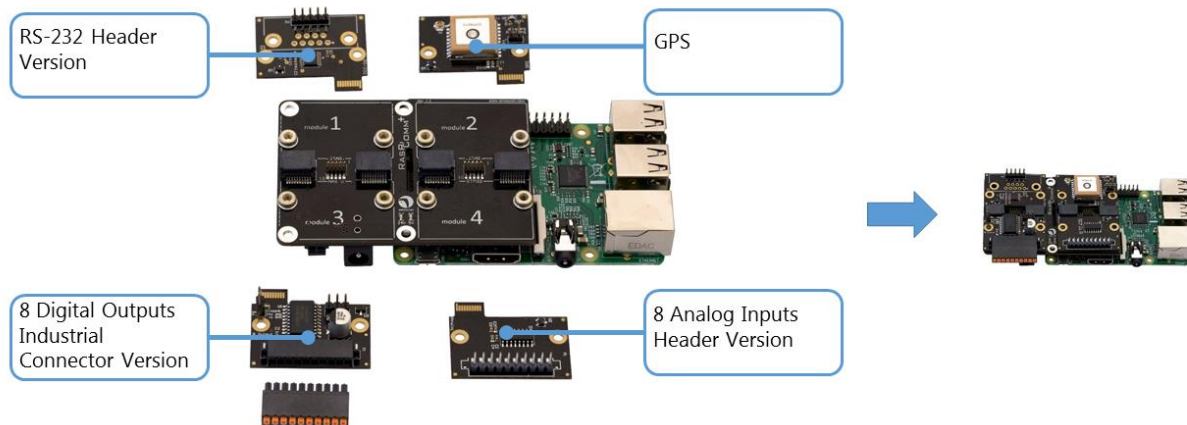


Available modules

- 8 Digital Inputs
- 8 Digital Outputs
- 8 Analog Inputs
- RS-232
- RS-485
- Profibus
- GSM (SMS, GRPS data)
- GPS
- 1-Wire
- 9-Axis Sensor (gyro, accelerometer, magnetometer)
- Sharp Memory LCD

More modules are in development

Configuration example



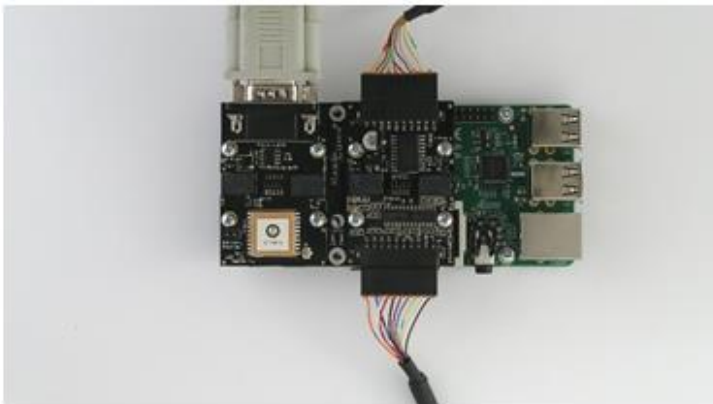


More configuration examples



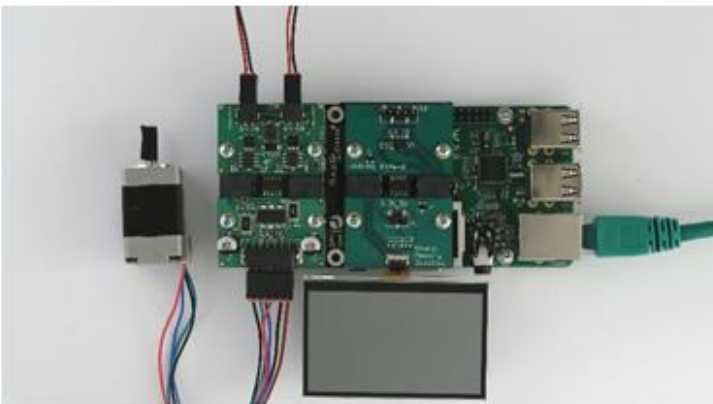
Modules

1. RS-485
2. GPS
3. RS-232
4. 1-Wire



Modules

1. RS-485
2. 8 Outputs
3. GPS
4. 8 Inputs



Modules

1. 1-Wire
2. 9-Axis Sensor
3. Stepper Motor
4. LCD Display

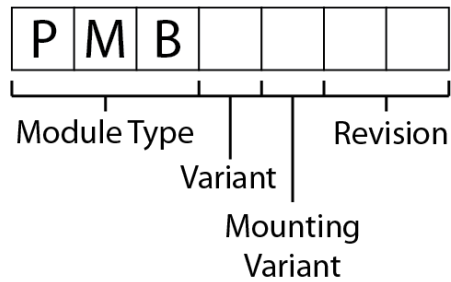


Tutorials

We have a list of tutorials for many different applications online, including remote-control through a web-interface and SMS notifications.

Please visit www.amescon.com/tutorials and get started!

Product Reference Guide (SKUs)



Variant

C	Commercial
I	Industrial

Mounting Variant

0	Power supply through Raspberry Pi
1	Onboard 5V Power Supply
2	Onboard 24V DC/DC Converter

Revision

01	First official revision (PCB rev 1.2)
----	---------------------------------------

Available PCB Variants

Variant	Mounting Variant	Revision	Documentation
C	0	01	Pi-Powered Pilot Mainboard
C	1	01	5V powered Pilot Mainboard
I	2	01	24V powered Pilot Mainboard (with isolated DC/DC converter)



Disclaimer

Amescon GmbH does not authorize or warrant any of its products for use in life support systems, without the specific written consent of Amescon GmbH. Life support systems are equipment intended to support or sustain life, and whose failure to perform, when properly used in accordance with instructions provided, can be reasonably expected to result in personal injury or death.

Important Notice

Amescon GmbH reserves the right to make corrections, enhancements, improvements and other changes to its products and services, and to discontinue any product or service without further notice. Buyers should obtain the latest relevant information before placing orders and should verify that such information is current and complete.

The Information supplied above is believed to be accurate but Amescon GmbH assumes no responsibility for its accuracy or completeness, any error in or omission from it or for any use made of it. Users of this data sheet should check for themselves the Information and the suitability of the products for their purpose and not make any assumptions based on information included or omitted. Liability for loss or damage resulting from any reliance on the Information or use of it (including liability resulting from negligence or where Amescon GmbH was aware of the possibility of such loss or damage arising) is excluded.

All Pilot products (main board and modules) are sold subject to Amescon's terms and conditions of sale supplied at the time of order acknowledgement.

This data sheet and its contents (the "Information") belong to Amescon GmbH or are licensed to it. No licence is granted for the use of it other than for information purposes in connection with the products to which it relates. No licence of any intellectual property rights is granted.