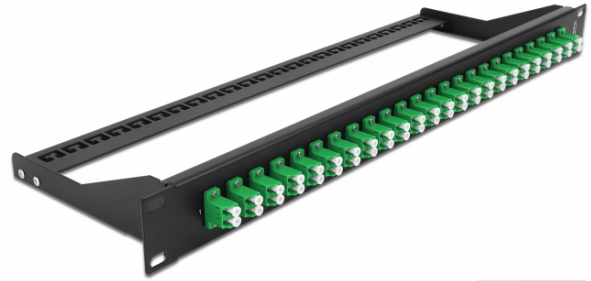


# Delock 19" Fibre Patch Panel 24 port LC Duplex green

## Description

This patch panel by Delock can be mounted in a 19" rack. The jacks on the front and rear of the panel provide convenient connections for fibre patch cable.



## Specification

- Connectors:
  - 24 x LC Duplex female >
  - 24 x LC Duplex female
- Colour: green
- For 48 OS2 Single-mode fibers
- Zirconia ceramic ferrule with protection cap
- For mounting in 19" racks, 1U
- Removable strain relief
- Housing colour: black
- Dimensions (LxWxH): ca. 482.6 x 150.0 x 43.6 mm

## Package content

- 19" patch panel

## Item no. 43387

EAN: 4043619433872

Country of origin: China

Package: White Box

General	
Mounting type:	19 in
Physical characteristics	
Housing colour:	black
Depth:	150 mm
Width:	482.6 mm
Height:	43.6 mm