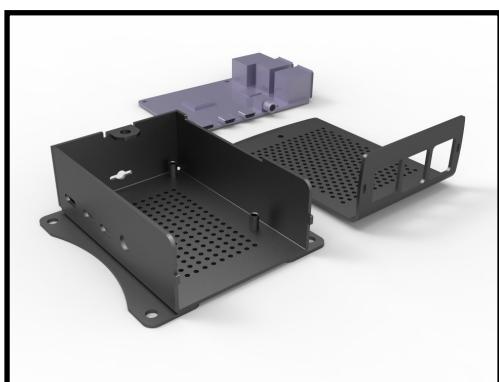


RB-ALUCASEP4+06

Aluminium Case for Raspberry Pi 4 B



This robust, high-quality aluminium case for your Raspberry Pi 4 B is flexibly versatile for it can be mounted on a wall or furniture. Each of the ports is accessible, also cables from the GPIO port can be led outside.



MAIN FEATURES

Material	Aluminium
Color	Black
Compatible with	Raspberry Pi 4 B
Special features	Wall bracket, venting holes on the topside
Size	95 x 32 x 60 mm
Items delivered	Aluminium case and wall bracket, screws

FURTHER DETAILS

Article No.	RB-AlucaseP4+06
EAN	4250236819358
Customs Tariff No.	8473308000