

Item no.: 339958

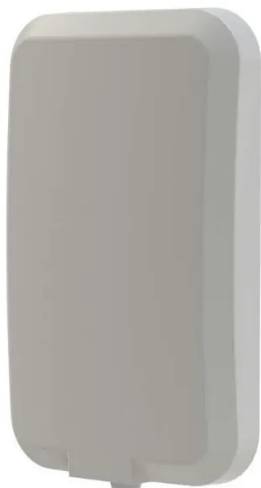
## WMM4G-6-60-5SP - Directional 4x4 MiMo 4G/5G Antenna, 4x SMA (m)

**296,25 EUR**

Item no.: 339958

shipping weight: 5.40 kg

Manufacturer: Panorama Antennas



### Product Description

WMM4G-6-60-5SP - Directional 4x4 MiMo 4G/5G Antenna, 4x SMA (m)

The WMM4G-6-60 is a high gain directional 4x4 MiMo antenna for 4G and 5G networks. It incorporates four pairs of wideband element assemblies in a single housing and is designed to support fixed site CAT18/20 client devices. It offers 6 dBi peak gain for 617- 960 MHz and 9 dBi peak gain for 1710-6000 MHz.

The weather resistant housing is designed for wall or mast mounting with the supplied hardware.

The standard WMM4G-6-60-5SP version has 5 m length ultra-low loss CS32-type coaxial cables which eliminates exposed connector joints and simplifies the installation process.

The WMM4G-6-60-05NJ version has 50 cm length cables, fitted with N type jack, which is ideal for installations that require a longer cable run, where Panoramas CS240 or CS400 type coaxial cable can be used to minimize the cable insertion loss.

The WMM4G-6-60 is a value added product for network operators and service providers by improving the link resilience to the router, achieving increased data rates for the subscriber, resulting in customer satisfaction and retention.

#### Electrical Data

- Frequency range: 617-960/1710-6000 MHz
- Operational bands: 4G/5G
- Radiation pattern: Directional
- Nominal polarization: +/-45°/vertical
- Peak gain (excl. cable loss)\*: 617-960 MHz: 6 dBi; 1710-6000 MHz: 9 dBi
- Efficiency (excl. cable loss, all bands): > 60%
- Correlation co-efficient (all bands): < 0.2
- Max. input power: 20 Watts

#### Mechanical Data

- Dimensions: Height: 507 mm (19.96); Width: 307 mm (12.01); Depth: 85 mm (3.34)
- Operating temp.: -40°C/+80°C (-40°F/176°F)
- Material: ASA
- Color: White
- IP rating: IP66
- Radome material certifications: UL94-HB, UL746C-f2
- Weight: 5400 g
- Survival wind speed: 55 m/s
- Typical wind load at 45 m/s: 200 N

#### Mounting Data

- Fixing: Wall mount/flush wall mount/mast mount
- Mounting bracket material: Coated steel/aluminum/stainless steel
- Pole diameter: 20-50 mm/0.78 - 1.96

#### Cable & Connector Data

- Cable type: Cell cables: CS32 FRZH both meet EN6722/EN45545-2
- Diameter: 5 mm (0.2)
- Length: 5 m (16.4)
- Connector: SMA (m) x4

\*Peak gain derived from CST Microwave Studio and excludes cable loss.

## Specifications

---

**Scan this QR code to  
view the product**  
All details, up-to-date  
prices and availability

