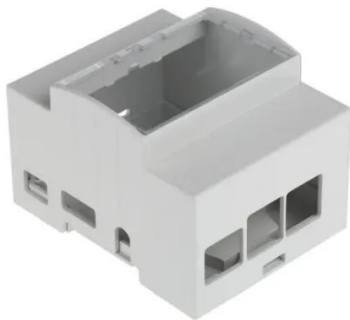


Item no.: 344221

## 25.0410000.RMB - DIN Rail Mounting Case for Raspberry Pi B+ Development Board, transparent

from **19,87 EUR**

Item no.: 344221  
shipping weight: 0.10 kg  
Manufacturer: Italtronic



### Product Description

DIN Rail Mounting Case for Raspberry Pi B+ Development Board, transparent

From Italtronic a DIN (EN 60715) modulbox mounting case designed to enclose and protect your Raspberry Pi Model B+ development board. This DIN rail mount Raspberry Pi case is designed according to DIN 43880 to meet the requirements of a range of applications including heating control, lighting control and energy metering. The RPi case is made from UL94V-0 self-extinguishing plastic and consists of an enclosure body and base with a transparent cover. The transparent cover of this Raspberry Pi case can be removed to allow easy access to the RPi development board, GPIO pins and other internal components. This Raspberry Pi case has plenty of room inside for fitting expansion boards onto the Pi GPIO header. A DIN rail hook is provided which attaches to the case to allow quick mounting. Cutouts on the front panel and body of the enclosure are provided to accommodate USB and Ethernet ports and connectors.

- Suitable for use with Raspberry Pi Model B+ development board
  - Designed according to DIN 43880
  - Robust self-extinguishing UL94V-0 plastic
  - Removable transparent cover for easy access to RPi and GPIO pins
  - Spacious design with room for expansion boards onto the Pi GPIO header
  - DIN rail hook for quick mounting
  - Cutouts for ports and connectors
- 
- For use with: Raspberry Pi B+
  - Series: Modulbox DIN rail
  - Color: Transparent
  - External dimensions: 90.5 x 71.3 x 62 mm
  - Body material: Polycarbonate

### Specifications

Scan this QR code to  
view the product  
All details, up-to-date  
prices and availability

