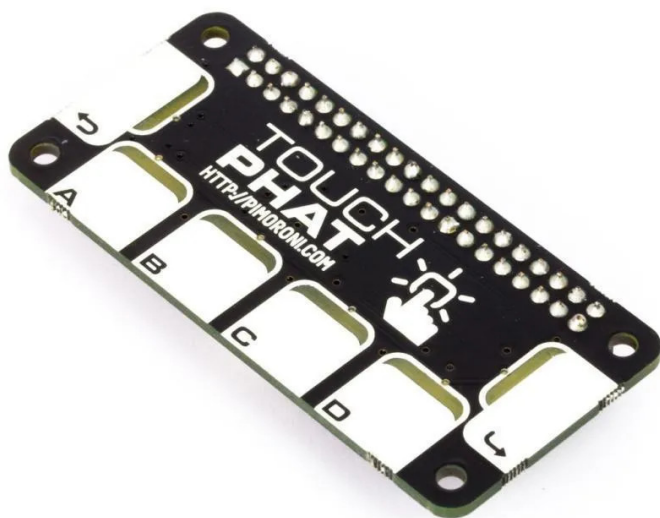


Item no.: 345819

## PIM280 - Touch pHAT Capacitive Touch Board for Raspberry Pi

from **15,14 EUR**

Item no.: 345819  
shipping weight: 0.10 kg  
Manufacturer: Pimoroni



### Product Description

Pimoroni Touch pHAT Capacitive Touch Board for Raspberry Pi

Six touch-sensitive buttons to use for whatever your heart desires, with added LEDs (did you expect anything less?)

Touch pHAT has six capacitive touch buttons, each with a bright white LED, designed to be completely agnostic about what they're used for. You can even use a dry erase pen to write on the pads to label their function.

It uses the CAP1166 capacitive touch and LED driver chip. The LEDs have been under-mounted and shine through exposed sections of the PCB to give a pleasing yellow-green glow and a completely smooth top surface!

Use Touch pHAT as a controller for your robot, a controller for your Mote lights, a tiny drum machine, or use it to build a simple game where you have to tap the buttons to repeat the sequence of lights that just flashed.

The MagPi gave Touch pHAT a four star review and said that it "makes it a lot easier to add input buttons to projects".

- 6x capacitive touch buttons
- 6x bright white under-mounted LEDs
- Microchip CAP1166 capacitive touch and LED driver chip
- Touch pHAT pinout
- Compatible with all 40-pin header Raspberry Pi models
- Python library
- Female header requires soldering

### Specifications

Scan this QR code to  
view the product  
All details, up-to-date  
prices and availability

