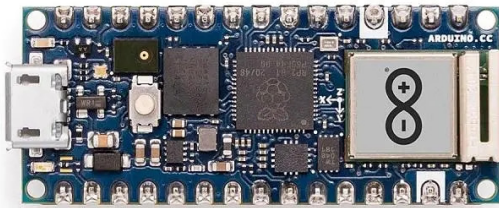


Item no.: 353151

ABX00053 - Nano RP2040 Connect with headers

from **29,28 EUR**

Item no.: 353151
shipping weight: 0.10 kg
Manufacturer: Arduino



Product Description

Arduino Nano RP2040 Connect with Headers

Arduino Nano RP2040 Connect allows you to build your next smart project. Ever wanted an automated house? Or a smart garden? Well, now it's easy with the Arduino IoT Cloud compatible boards. It means: you can connect devices, visualize data, control and share your projects from anywhere in the world. Whether you're a beginner or a pro, Arduino has a wide range of plans to make sure you get the features you need.

Meet the only connected RP2040 board. It fits the Arduino Nano form factor, making it a small board with BIG features.

The brain of the board is the the Raspberry Pi® RP2040 silicon; a dual-core Arm Cortex M0+ running at 133 MHz. It has 264 KB of SRAM, and the 16 MB of Flash memory is off-chip to give you extra storage.

But what's really exciting is the on-board connectivity options. The hugely popular and highly adaptable u-blox NINA-W102 radio module is on there to make this a true IoT champion. This also means you can harness the power of the cloud, with full Arduino Cloud compatibility.

It's got on-board, built-in sensors to turn your builds into powerhouse projects, too. Microphone and motion sensing add a depth of possibilities that's almost impossible to find in a board of this size.

The Arduino Nano RP2040 Connect is the premium choice for RP2040 devices, and the perfect option for upgrading your projects and unlocking the potential of new ones.

- Board: Nano RP2040 Connect with headers
- SKU: ABX00053
- Microcontroller: Raspberry Pi® RP2040
- USB connector: Micro USB
- Pins: 13x built-in LED pins, 20x digital I/O pins, 8x analog input pins, 20x PWM pins (except A6, A7), 20x external interrupts (except A6, A7)
- Clock speed (processor): 133 MHz

Connectivity

- Wi-Fi: Nina W102 uBlox module
- Bluetooth®: Nina W102 uBlox module
- Secure element: ATECC608A-MAHDA-T Crypto IC

Sensors

- IMU: LSM6DSOXTR (6-axis)
- Microphone: MP34DT05

Communication

- UART: Yes
- I2C: Yes
- SPI: Yes

Power

- Circuit operating voltage: 3.3 V
- Input voltage (V in): 5-21 V
- DC current per I/O pin: 4 mA

Memory

- AT25SF128A-MHB-T: 16 MB Flash IC
- Nina W102 uBlox module: 448 KB ROM, 520 KB SRAM, 16 MB Flash

Dimensions

- Weight: 6 g
- Width: 18 mm
- Length: 45 mm

Specifications

**Scan this QR code to
view the product**
All details, up-to-date
prices and availability

