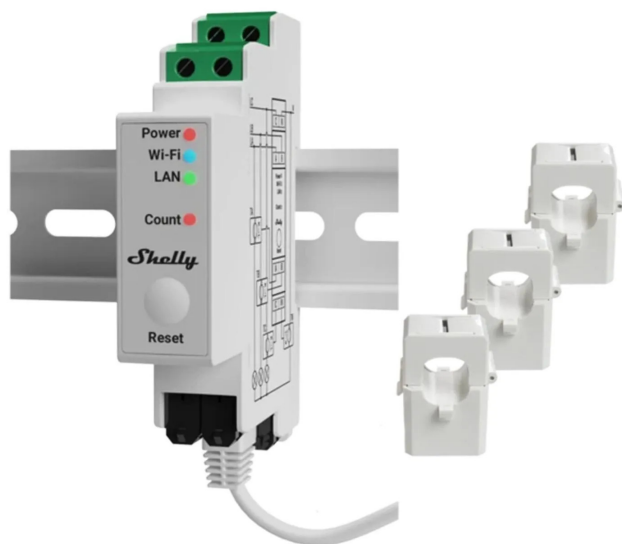


Item no.: 357959

Pro 3EM Power Consumption Meter

from **152,58 EUR**

Item no.: 357959
shipping weight: 0.50 kg
Manufacturer: Shelly



Product Description

The Shelly Pro 3EM is a WLAN-powered, DIN-mountable 3-phase power consumption meter with WLAN, Bluetooth and LAN connectivity. The Shelly Pro 3EM can be used to monitor the consumption of all household appliances, circuits and office equipment individually. Historical data is stored for up to 60 days, with each phase having a one-minute resolution. In addition, scripting capabilities allow the execution of complex scenarios and provide advanced monitoring capabilities. The package includes 3 pieces of 120A current transformers.

- WLAN-powered, DIN-mountable 3-phase power consumption meter with WLAN, Bluetooth and LAN connectivity
- Current transformers: 3x CT120 included in the package
- Mounting: DIN rail
- Ambient temperature: -20°C to 40°C / -5°F to 105°F
- Humidity: 30% to 70% RH
- Supply voltage AC: 110 - 240 V, 50/60 Hz
- Power consumption: < 3 W
- Temperature sensor: Yes
- Wi-Fi protocol: 802.11 b/g/n
- Bluetooth protocol: 4.2

Specifications

Scan this QR code to
view the product

All details, up-to-date
prices and availability

