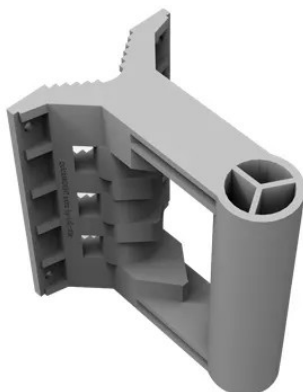


Item no.: QME

QME - quickMOUNT extra - Wall mount adapter for large antennas

from **6,67 EUR**

Item no.: QME
shipping weight: 0.40 kg
Manufacturer: MikroTik



Product Description

MikroTik quickMOUNT extra - Wall mount adapter for large antennasThe quickMOUNT extra is an advanced wall mount adapter for large point-to-point and sector antennas. You can mount it on the wall or use it as an adapter from a large diameter pole to a small-size antenna mounting clip ensuring reliable fitment. The quickMOUNT extra offers the possibility to turn the antenna within 190°.The quickMOUNT extra is compatible with long-range heavy antennas like the 30 dBi parabolic dish mANT 30 or the 19 dBi sector mANT 19s. You can use the quickMOUNT extra with any pole-mountable device with a weight less than 8 kg.

- simple and low cost
- supports mANT, SXT, Omnitik, BaseBox, DynaDish or any other pole-mountable device

The adapter is very durable due to its special material composite - anvilNITE(TM).

Specifications

- Product code: QME
- Dimensions: 102 x 135 x 150 mm
- Tube diameter: 35 mm
- Max. tube diameter to which the mount can be attached: 70 mm
- Maximum antenna weight: 8 kg
- Maximum wind load: 100 N
- Turn angle for MikroTik products: 190°
- Compatible devices: Any pole-mounted antenna with a weight under 8 kg
- Mounting holes: 4 (option to add 2 more)
- Operational temperature range: +/-40°C
- Material: anvilNITE(TM)

Specifications

Scan this QR code to
view the product
All details, up-to-date
prices and availability

