

Item no.: 342557

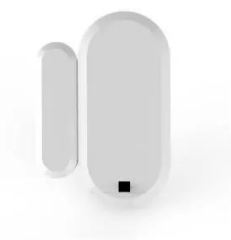
## S4 DOOR/WINDOW SENSOR - S4 Door and Window Sensor

**15,20 EUR**

Item no.: 342557

shipping weight: 0.10 kg

Manufacturer: MINEW Technologies



### Product Description

#### S4 Door and Window Sensor

The S4 door and window sensor is loaded with a Bluetooth Low Energy 5.0 hardware platform and can be installed on doors, windows and even desk drawers. By detecting the opening and closing of doors and windows, the S4 can wirelessly notify users of arrivals and departures. The S4 consists of a main body, mounted to the door or window frame, and a magnet to be mounted to the door or window. The S4 door and window sensor is an affordable way to add security and automation to the existing smart IoT system.

#### Radio

- Wireless protocol: Bluetooth 5.0
- Antenna: PCB antenna
- Transmit power: 0 dBm (-20 ~ +4 dBm)
- Data storage: 2,000 records
- Range: Up to 100 meters

#### Battery

- Model: -
- Capacity: 220 mAh
- Replaceable: Yes
- Operating voltage: DC 3.0 V
- Operating temperature: -20°C to +60°C (battery limit)
- Operating humidity: 0% ~ 95% RH (non-condensing)
- Battery life: 13 months

#### Product Compliance

- Certification: CE, FCC, RoHS,

#### Service

- Configuration app: MSensor, iOS & Android

#### Parameters

- Material: ABS
- Dimensions: Main body size: 55 x 26.2 x 13 mm; Magnet size: 38.5 x 12.5 x 11 mm
- Weight: 26.6 g
- Chipset: Nordic nRF52
- Color: White
- Built-in sensor: Magnetic sensor
- Power on: Remove the insulation sheet
- Data storage switch: Turn off by default
- Connection configuration distance: 25 meters

### Specifications

**Scan this QR code to  
view the product**  
All details, up-to-date  
prices and availability

