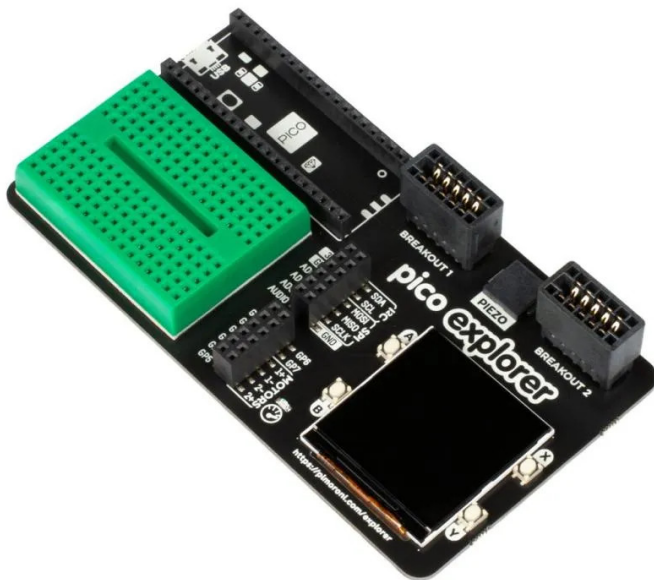


Item no.: 345796

PIM550 - Pico Explorer Base Board

from **38,87 EUR**

Item no.: 345796
shipping weight: 0.10 kg
Manufacturer: Pimoroni



Product Description

Pimoroni Pico Explorer Base

Transform your Raspberry Pi Pico into an electronic adventure playground packed with physical computing goodies including an LCD screen, motor drivers, a mini breadboard, and much more!

Pico Explorer lets you play with circuits, build science experiments, prototype tiny robots and inventions and, most importantly, **FIGURE OUT HOW IT ALL WORKS.**

Pimoroni have incorporated tinkering essentials like a mini breadboard, motor drivers, ADC inputs, a built in speaker, general purpose inputs/outputs, switches, and two Breakout Garden slots so you can add on a couple of their wide range of Pimoroni breakouts.

They've also managed to fit in a vibrant 240x240 IPS LCD screen with four tactile buttons so you can easily monitor and control what your project is doing. It's all wrapped up in a nice, sturdy baseboard with a pleasingly compact footprint which won't involve nearly as many trailing wires as if you were experimenting with a traditional breadboard setup. Boo wires, yay Pico Explorer!

Pimoroni's comprehensive MicroPython and C++ libraries will let you control every aspect of the board like a digital maestro. It's great for beginners, advanced users, and people who awkwardly sit somewhere in the middle and cannot be placed into a simple demographic bucket - we know who you are.

Pimoroni have really crammed all the functionality they could into this board - quite a few of them were lucky enough to have all-in-one electronic circuit kits when they were small and so they jumped at the chance to put together a bang up-to-date version.

Raspberry Pi Pico and breadboardable components like LEDs, jumper wires and extra buttons are not included.

Your Pico will need to have male headers soldered to it (with the pins pointing downwards) to attach to their add-on boards.

- Pico Explorer Base
- Piezo speaker
- 1.54" IPS LCD screen (240 x 240)
- 4x user-controllable switches
- 2x half-bridge motor drivers (with over current indicator LED)
- Easy access GPIO and ADC pin headers
- 2x Breakout Garden I2C sockets
- Mini breadboard
- Rubber feet
- Compatible with Raspberry Pi Pico
- No soldering required (as long as your Pico has header pins attached)
- Dimensions: Approx. 117 x 63 x 20 mm (L x W x H, assembled)
- C/C++ and MicroPython libraries
- Schematic

Specifications

Scan this QR code to
view the product

All details, up-to-date
prices and availability

