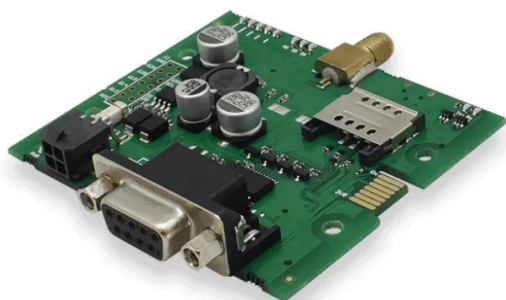


Item no.: TRB142

TRB142003000 - TRB142 - Linux-Based Industrial IoT Gateway Board, RS232 Interface

from **102,58 EUR**

Item no.: TRB142
shipping weight: 0.40 kg
Manufacturer: Teltonika



Product Description

Teltonika TRB142 - Linux-Based Industrial IoT Gateway Board, RS232 Interface TRB family devices are designed to be small, lightweight and energy efficient - allowing you to do IoT projects with ease. TRB142 comes with the widely used RS232 port for remote device management. It contains a high-performance ARM Cortex-A7 1.2 GHz processor and 128 MB RAM. It is equipped with mission-critical LTE capabilities and a Linux environment offering a high degree of customization.

Scope of delivery:

- TRB142 board
 - Euro PSU
 - LTE antenna (magnetic mount, SMA male, 3 m cable)
 - Quick Start Guide
-
- LTE: LTE CAT1/CAT4
 - UMTS/DC-HSPA+: DC-HSDPA up to 42 Mbps (DL), HSUPA up to 5.76 Mbps (UL)
 - GSM/GPRS/EDGE: EDGE up to 236.8 kbps DL, 236.8 kbps UL
 - RS232: DB9 socket, 5-pin configuration with flow control
 - Input/output: 1x digital input, 1x digital output
 - Hardware: ARM Cortex-A7 1.2 GHz CPU 128 MB RAM (50 MB available for users) 512 MB Flash (70 MB available for users) 4-pin industrial DC power socket SIM slot (2FF) 1x SMA for LTE Micro-USB connector Reset button Power, signal, network and data status LEDs
 - Security: Firewall: pre-configured firewall rules can be enabled via web-ui, unlimited firewall configuration via CLI; DMZ; NAT; NAT-T
 - Input voltage range: 9 - 30 V DC
 - Operating temperature: -40 °C to 75 °C
 - Storage temperature: -45 °C to 80 °C
 - Operating humidity: 10% to 90% non-condensing
 - Storage humidity: 5% to 95% non-condensing
 - Dimensions: 60 mm x 70 mm x 18 mm
 - Weight: 100 g

Specifications

Scan this QR code to
view the product
All details, up-to-date
prices and availability

