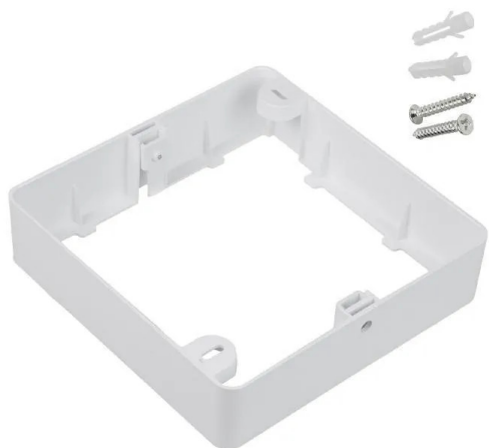


Item no.: 375213

MCE379 - Maclean surface-mounted adapter, for LED panel 18W , square, 170*170*38mm, S

from **1,79 EUR**

Item no.: 375213
shipping weight: 0.10 kg
Manufacturer: Maclean Brackets



Product Description

The MCE379 frame is designed for surface mounting square LED panels measuring 170 x 170 mm. This allows you to mount the LED panel quickly and easily on a normal ceiling. Easy installation using mounting pins. Specification- Manufacturer: Maclean- Model: MCE379 S- For panels with dimensions: 170x170 mm- Suitable for panel: Maclean MCE374 S- Material: plastic- Dimensions: 170 x 170 x 38 mm- White colour Set includes- Surface-mounted adapter for 18W LED panel, square Maclean MCE379 S- Manufacturer's packaging Features- Practical square frame for surface mounting- Easy installation using mounting pins- Designed for panels measuring 170x170 mm- Suitable for model MCE374 S- White colour

Specifications

Scan this QR code to
view the product
All details, up-to-date
prices and availability

