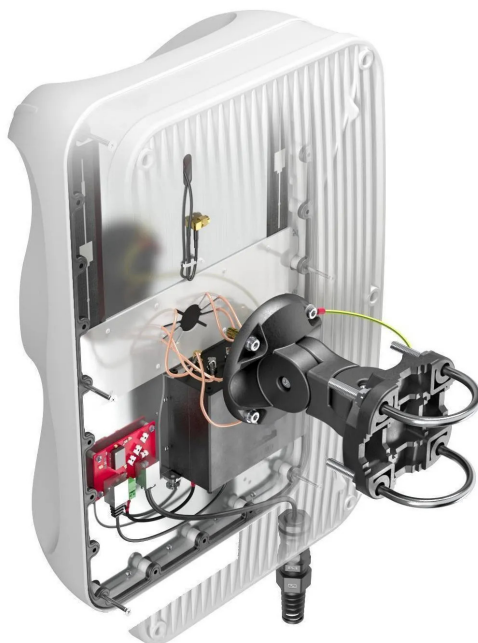


Item no.: 384338

## AR5020M - QuMax for Robustel R5020

from **224,66 EUR**

Item no.: 384338  
 shipping weight: 3.00 kg  
 Manufacturer: QuWireless



### Product Description

**INTEGRATED MULTI-BAND LTE & 5G PANEL ANTENNA + WI-FI OMNI ANTENNA + GPS + PLACE TO INSTALL Robustel R5020 (ALL-IN-ONE)QuMax for Robustel R5020** is a high performance directional antenna designed for use in a variety of wireless communication applications. This all-in-one product consists of multi-band 5G, Wi-Fi and GPS antennas, integrated in IP67 enclosure. It offers 7.5 dBi gain and wide beam width, which makes it suitable for use in both urban and rural environments. Combining QuMax with R5020 inside the antenna housing gives you complete outdoor solution with multiple use scenarios such as transportation public, energy, mining IoT and more. Wi-Fi 6E support! Note! This antenna comes in two different versions, depending on your router configuration. When you use R5020 supporting Power over Ethernet (PoE) please choose version "no PoE splitter". For R5020 without PoE support, please choose "PoE splitter" version. Compatible Robustel part numbers available in the specification below.

**5G / LTE ANTENNA SPECIFICATION**  
 FREQUENCY- 0.617 - 0.96 GHz- 1.7 - 2.7 GHz- 3.3 - 4.6 GHz- 4.7 - 6.0 GHz  
 GAIN- 0.617 - 0.96 GHz: 6 dBi- 1.7 - 2.7 GHz: 7 dBi- 3.3 - 4.6 GHz: 7 dBi- 4.7 - 6.0 GHz: 5.5 dBi  
**SUPPORTED LTE BANDS-** 1, 2, 3, 4, 5, 7, 8, 9, 10, 12, 13, 14, 17, 18, 19, 20, 22, 25, 26, 27, 28, 29, 30, 33, 34, 35, 36, 37, 38, 39, 40, 41, 42, 43, 44, 46, 47, 48, 49, 52, 53, 65, 66, 67, 68, 69, 71, 85, 103, 106  
**SUPPORTED 5G BANDS-** n1, n2, n3, n5, n7, n8, n12, n13, n14, n18, n20, n25, n26, n28, n29, n30, n34, n38, n39, n40, n41, n46, n47, n48, n53, n65, n66, n67, n71, n77, n78, n80, n81, n82, n83, n84, n85, n86, n89, n90, n95, n97, n98, n100, n101, n256  
 VSWR- <2.00, max <3.00  
**BEAMWIDTH-** 80°/80° ±15°  
**POLARIZATION-** X (+/-45degrees)  
**IMPEDANCE-** 50 Ω  
**Wi-Fi antenna specification**  
 FREQUENCY- 2.40 - 2.50 GHz- 5.0 - 7.125 GHz  
 GAIN- 2.40 - 2.50 GHz : 6 dBi- 5.0 - 7.125 GHz : 7.5 dBi  
 VSWR- <1.70, max <2.00  
**BEAMWIDTH-** 360°/25° ±5°  
**POLARIZATION-** Vertical  
**IMPEDANCE-** 50 Ω  
**MECHANICAL SPECIFICATION**  
**MATERIALS-** ABS, aluminum, PTFE, Fiberglass  
**CONNECTOR TYPE-** RJ45  
**INGRESS PROTECTION-** IP67  
**DIMENSIONS-** 486.0 x 292.2 x 105.6 mm- 19.13 x 11.50 x 4.16 inch  
**WEIGHT-** 2.8 kg- 6.17 lbs  
**OPERATING TEMPERATURE-** From -40°C to 80°C- From -40°F to 176°F  
**MAST DIAMETER-** 25-60mm- 0.98-2.36 inch

### Specifications

Scan this QR code to  
 view the product  
 All details, up-to-date  
 prices and availability

