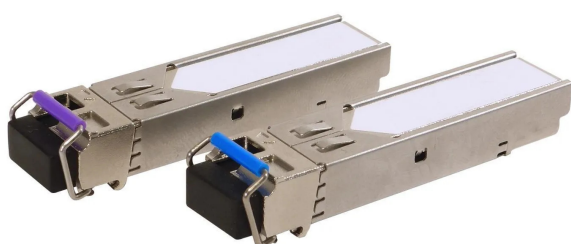


Item no.: 389641

EKA2SFP1F - Kit: Module - Adapter 2 x SFP1310 1490 nm

from **97,61 EUR**

Item no.: 389641
shipping weight: 0.20 kg
Manufacturer: Teledesic



Product Description

Kit consisting of 2/bi-directional SFP (Small Form-Factor Pluggable) transceiver modules 1000 Base-X with LC connector to extend the network up to 10 km through single mode (SM) fibre 9/125 µm. This powerful media adapter can be connected to an Ethernet input of a CoaxData device to enable its access to an Ethernet signal through optical fibre. They use 1310 & 1490 nm wavelength and support RF overlay to 1550 nm. Highlights- SFP (Small Form Pluggable) module- 1 single-mode fibre (SM)- Operating data rate of 1250 Mbps- Optical LC/UPC simplex connection- Up to 10 km transmission distance- Hot-pluggable- Supports RF overlay (video transmission) in an Ethernet network- Support of WaveData access points with Art. No. WAVEDATASGood to knowWhat is an SFP?The Small Form-Factor Pluggable (SFP) devices are adapters that create an interface to enable access to an Ethernet signal via fibre optic cables. These devices can be connected to the inputs of various Ethernet and GPON devices, and allow information to be sent/received by connecting to single-mode or multi-mode fibre optic cables or Ethernet cables. The advantages of using SFP modules include reduced space requirements, lower energy consumption and increased transmission distances. When to use which SFP? Depending on the devices to which they are connected, the transmission speed or the type of cable used, several media converter options are available. The compatibility between the SFPs and the various Ethernet and GPON devices is described below.

Specifications

Scan this QR code to
view the product

All details, up-to-date
prices and availability

