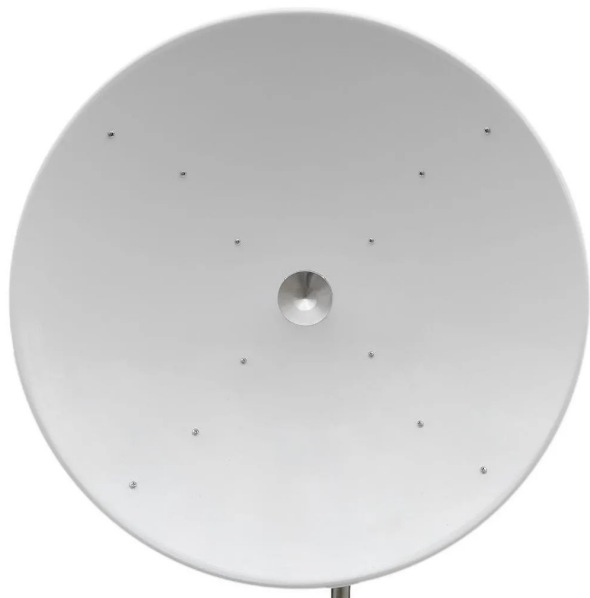


Item no.: 395334

DSH5032DPX - 5.1 - 5.9 GHz

from **404,30 EUR**

Item no.: 395334
shipping weight: 10.00 kg
Manufacturer: ITELITE



Product Description

Antenna Main features- Broadband- Dual-polarised- High-gain dish antenna- Long range C-band communication- Made with high quality materials- Weather resistantAntenna applications- 2x2 MIMO PTP/PMP long range links- Broadband wireless infrastructure in C-band- 5.15 to 5.85 GHz WLAN, WiFi and 5 GHz WiMaxAntenna specificationElectrical characteristics- Frequency range: 5.1-5.9 GHz- Gain: 32 dBi- Polarisation: Linear. H&V or Slant+/-45°- Horizontal beamwidth: $3.7^\circ \pm 0.5^\circ$ @ -3dB- Vertical beamwidth: $3.7^\circ \pm 0.5^\circ$ @ -3dB- VSWR: < 1.7- Impedance: 50 Ohm- Front to back ratio: > 30 dB- Port isolation: > 35 dBMechanical properties- Connector: 2 x N-type socket (or 2x SMA)- Wind load: 150 km/h- Mounting pole \varnothing : 5.5cm / 2.16"- RoHS compliant: YesHousing properties- Material: Aluminium- Colour: White/order- External dimensions: 950 mm (including edge)- Weight: 10 kg- Temperature range: -40 +80°C / -40 +176°F

Specifications

Scan this QR code to
view the product
All details, up-to-date
prices and availability

