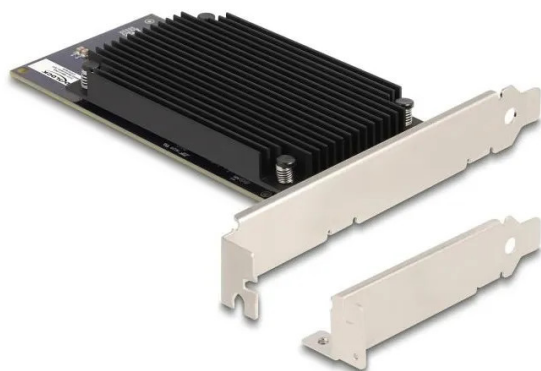


Item no.: 398145

## 31416 - PCI Express x8 Hailo-8 AI processor x2 AI accelerator

from **597,54 EUR**

Item no.: 398145  
shipping weight: 0.20 kg  
Manufacturer: Delock



### Product Description

This PCI Express AI accelerator card by Delock enables the use of the Hailo-8™ AI processor in edge computers and provides an easy-to-implement solution to enable cost-efficient edge AI computing with higher processing performance and lower power consumption. PCI Express 3.0 The card also enables computers such as NVRs, edge AI boxes, industrial PCs and robots to run video-intensive edge AI applications such as video analytics, traffic management and access control. Hailo-8™ AI Inference Processor x2 The card can deliver up to 52 TOPS (Tera operations per second), making it suitable for demanding computer vision applications. Technical data- Connection: 1 x PCI Express x8, V3.0- Hailo-8™ AI processor x2- 52 TOPS AI performance- Hailo-8™ Software Suite:- Dataflow Compiler (model conversion and compilation)- HailoRT (runtime environment and drivers)- Model Zoo (pre-trained models)- TAPPAS (deployment framework, examples and multi-network pipelines)- Supports TensorFlow, TensorFlow Lite, ONNX, Keras, Pytorch- Low power consumption- Operating temperature: 0 °C ~ 50 °C System requirements- Linux (Ubuntu 20.04 / 22.04)- Windows 11 (drivers and API only) Package contents- PCI Express card- Low Profile bezel- User manual Packaging- Retail box

### Specifications

Scan this QR code to  
view the product  
All details, up-to-date  
prices and availability

