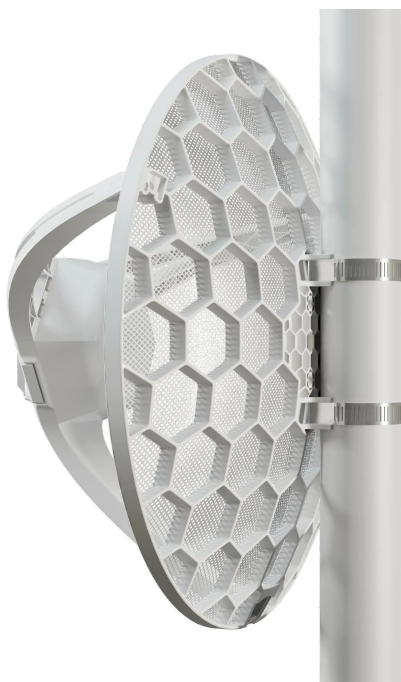


Item no.: 384949

LHGGR&FG621-EA - LHGG LTE6 kit



from **161,07 EUR**

Item no.: 384949
shipping weight: 4.00 kg
Manufacturer: MikroTik

Product Description

When cellular reception fails, the LHGG LTE6 kit steps in as a reliable last-mile internet solution. Its large 17dBi antenna and our latest Cat6 LTE modem with the ability to utilise multiple LTE bands simultaneously ensure a fast and reliable connection when all other options fail. Mount it on a pole, on your roof or any other tall structure - and always stay connected! This kit is an update that combines the strengths of our previous LHG bestsellers. Gigabit Ethernet has been added - so you can utilise the full speed potential of the LTE modem, which has also been upgraded from Cat4 to Cat6! The new LTE modem allows us to lower the price, increase performance and offer further discounts on bulk orders from mobile operators! The sleek and unobtrusive weatherproof design has proven its resilience in various climates, withstanding even the harshest winds with ease. This means significant time and cost savings in maintenance for you or your team. The powerful high-gain antenna offers broad support for a variety of LTE bands, ranging from 2.7 GHz to 700 MHz. With such comprehensive coverage, you can expect to receive a signal virtually anywhere in the world! Cable networks and phones can no longer limit you. Choose an LHG - and always stay connected! Technical data Details - Product code: LHGGR&FG621-EA - Architecture: ARM 64bit - CPU: 88F3720 - CPU core count: 2 - CPU rated frequency: 800 MHz - RouterOS licence: 3 - Operating system: RouterOS v7 - RAM size: 256 MB - Memory size: 16 MB - Memory type: FLASH - MTBF: Approximately 200,000 hours at 25°C - Tested ambient temperature: -40°C to 70°C Power supply Details - Number of DC inputs: 1 (PoE-IN) - Maximum power consumption: 8 W - Maximum power consumption without additional devices: 8 W - Cooling type: Passive - PoE in: 802.3af/at - PoE input voltage: 12-57 V Mobile Details - 3G category: R8 (42.2Mbps downlink, 11.2Mbps uplink) - 3G bands: 1 (2100MHz) / 3 (1800MHz) / 5 (850MHz) / 8 (900MHz) - LTE category: 6 (300Mbps downlink, 50Mbps uplink) - MIMO DL: 2x2 - MIMO UL: 1x1 - LTE FDD bands: 1 (2100MHz) / 3 (1800MHz) / 5 (850MHz) / 7 (2600MHz) / 8 (900 MHz) / 20 (800MHz) / 28 (700MHz) - LTE TDD bands: 38 (2600MHz) / 40 (2300MHz) / 41 (2500MHz) - TAC: 86335904 Ethernet Details - 10/100/1000 Ethernet ports: 1 Peripherals Details - Number of SIM slots: 1 Modem (Micro SIM) - MiniPCI-e slots: 1 Miscellaneous Details - Mode button: Yes Certification & approvals Details - Certification: CE, EAC, ROHS - IP: 54 Supplied parts - 24V 0.8A power supply - K-LHG kit - Gigabit PoE injector - Hose clamp 2 An operating system is pre-installed and licensed on the device. No separate purchase is required and the product is ready for immediate use. The device includes free software updates for the entire lifetime of the product or for at least 5 years from the date of purchase.

Specifications

Scan this QR code to
view the product
All details, up-to-date
prices and availability

