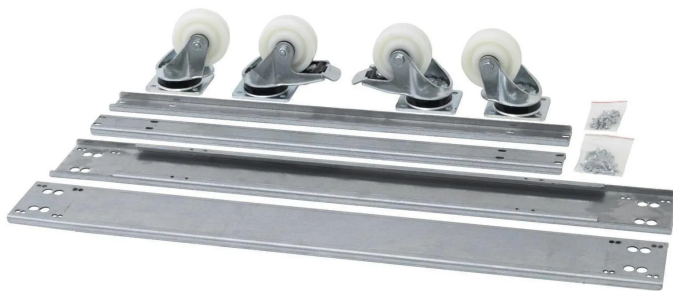


Item no.: 396093

RAX-RK-T86-X1 - Roller set with reinforcement frame 800x600 for RDARTA load capacity 1500 kg

from 288,55 EUR

Item no.: 396093
shipping weight: 3.00 kg
Manufacturer: Triton



Product Description

RAX-RK-Txx-X1 Castors with reinforcing frame for RTA, RDA, RDE, RYA distribution boards must be ordered according to the enclosure layout. The maximum load capacity when using RAX-RK-Txx-X1 is: - 1500 kg for RTA, RYA, RDA, RDE. The enclosure height is increased by 143 mm. Set of Castors with brakes 2x Castors without brakes 2x Screws M5 x 12 Thorx 16x Screws M5 x 20 Thorx 16x Large washers 5.3 16x U-profile 4x

Specifications

Scan this QR code to view the product
All details, up-to-date prices and availability

